

OPPLE



MODULE SENSOR

JUNE 2018 – MENA MARKET

LED Module sensor

Features & Benefits



Features

- Automatic switching based on motion and light level.
- Small size, easy installation.
- Detection area, time delay and daylight threshold can be precisely set via DIP switch.
- Wide detection area, range up to 12m in diameter.
- Maximum mounting height 6m
- Compatible with all modules & selective all the luminaires.

Benefits

- Compact size makes it suitable to fix within most luminaires.
- Easy for motion and light level setting.
- Energy saving
- Can control all kinds of LED lights

SAP CODE	SAP Description	Family name
140050766	LED E C module 16W 2700K Clio CT	Clio
140054629	LED E C module 16W 4000K Clio CT	Clio
140057237	LED E C module 36W 2700K Clio CT	Clio
140057238	LED E C module 36W 4000K Clio CT	Clio

LED Module sensor

Features & Benefits

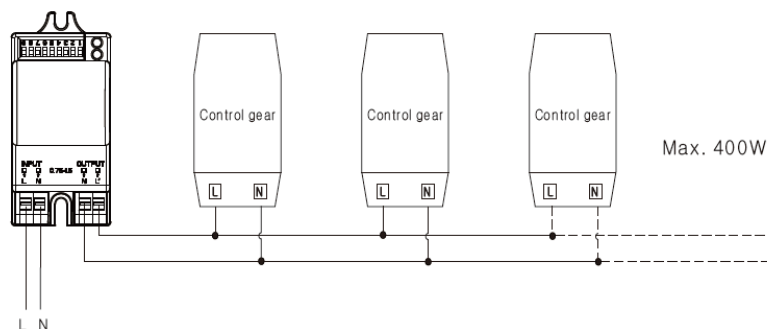
Particularly suitable for commercial use with switching power up to 400W for LEDs

Compatible with all modules, can be installed in ceiling products;

Test with indoor Lums on going.

Motion sensor, switch on the light on detection of movement, and switch off after a hold time when there is no motion detected.

Daylight sensor can read brightness value, the sensor does not switch on the light if with sufficient light



With sufficient light, the lamp doesn't switch on.



With insufficient ambient light, the sensor switches on the lamp when motion is detected.

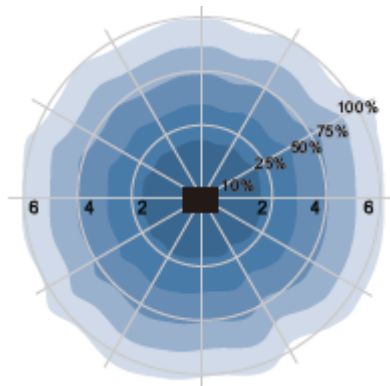


After hold time, the sensor switches off the lamp when no motion is detected.

LED Module sensor Setting

Default setting:

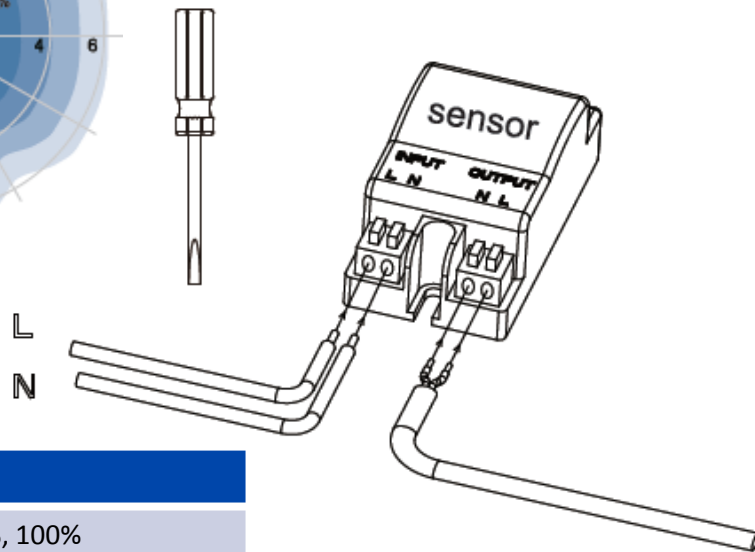
- Detection area: 100%
- Hold time: 5s
- Daylight sensor: Disable



How to setting:

By DIP switch to set up

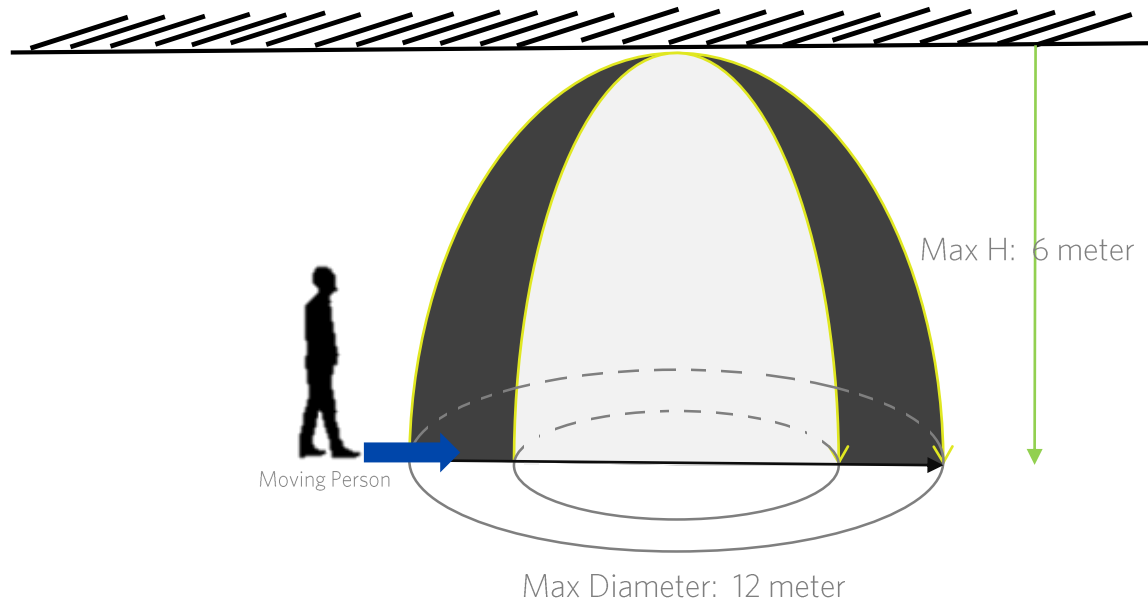
Item	No. switch	Range
Detection area	No.1~No.3	10%, 25%, 50%, 75%, 100%
Hold time	No.4~No.6	5s, 30s, 90s, 3min, 20min, 30min
Daylight sensor	No.7~No.9	2lux, 10lux, 25lux, 50lux, disable.



LED Module sensor Setting

Initial Detection Area Setting:

- Detection area:
10%, 25%, 50%, 75%, 100%
- Detection control area based on the intensity of Microwave to detect biological movement in control area.
 - Two installation: surface mounted and wall mounted, different installation influence detection area.
 - Sensor can control area depend on the distance of object, even keep the same height, if you select lower percent of Microwave, the area diameter is smaller compared with 100% percent



Tips: Motion is a change in the position of object or person with respect to time and its initial reference location. The motion can be specified in terms of displacement, velocity, direction, acceleration and time.



LED Module sensor

Control Area Diameter

Control Data



Max. 6M



Mounting Height
6m Max.



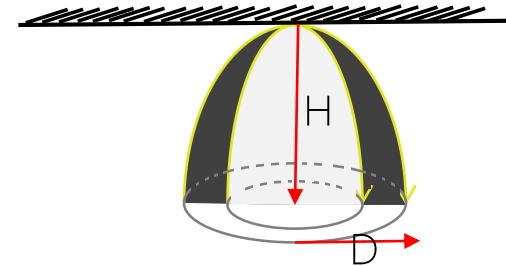
Automatic
On/Off



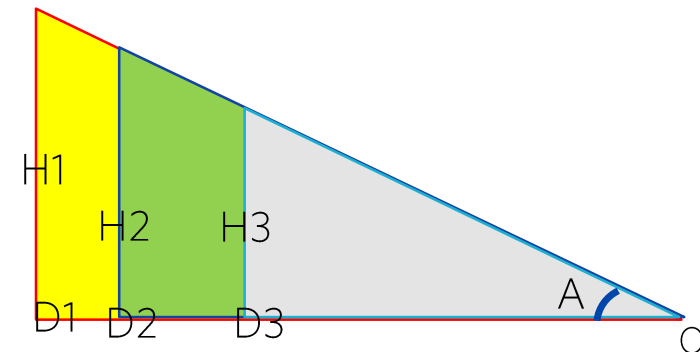
Hold Time
5s~30min



Light Sensor




$$\frac{H1}{OD1} = \frac{H2}{OD2} = \frac{H3}{OD3} = \tan A$$



If H is fixed, you can select DIP switch option group (from 10% to 100%) to control detection area. The percent is low, the distance of OD will be reduced. Max control diameter is 12 meter, and max height is 12 meter., so OD max is 6 meter.


LED Module sensor Setting



	1	2	3	
I	on	on	on	100%
II	----	on	on	75%
III	on	----	on	50%
IV	----	----	on	25%
V	----	----	----	10%

Detection Area


Detection area can be reduced by selecting the combination on the DIP switches to fit precisely each application.



	1	2	3	
I	on	on	on	5s
II	----	on	on	30S
III	on	----	on	90S
IV	----	----	on	3Min
V	on	on	----	20Min
VI	----	----	----	30Min

Hold Time

Refers to the time period the lamp remains at 100% illumination after no motion detected.



	1	2	3	
I	on	on	on	2lux
II	on	on	----	10lux
III	----	on	----	25lux
IV	on	----	----	50lux
V	----	----	----	Disable

Daylight sensor

The sensor can be set to only allow the lamp to illuminate below a defined ambient brightness threshold.

When set to Disable mode, the daylight sensor will switch on the lamp when motion is detected regardless of ambient light level.

50lux, 25lux: twilight operation, 10lux, 2lux: darkness operation only.

LED Module sensor

Specifications

Technical specification	
Operating voltage	220V~240Vac
Frequency (Hz)	50/60HZ
Rated load	400W LEDs
HF system	5.8GHz±75MHz, ISM wave band
Transmitting power	<0.5mW
Power consumption	≤0.5W(standby)
Detection zone	Max.(D x H): 12m x 6m
Detection sensitivity	10% / 25% / 50% / 75% / 100%
Hold time	5s / 30s / 90s / 3min / 20min / 30min
Daylight sensor	2lux / 10lux / 25lux / 50lux / Disable
Mounting height	6m Max.
Motion detection	0.5~3m/s
Detection angle	150° (wall installation) 360° (ceiling installation)
IP	20

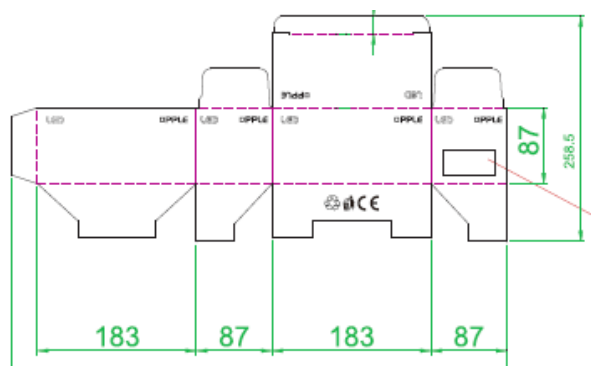
Application conditions	
Operating temperature	-20°C~+60°C
Application temperature	25°C
Storage temperature	-25~60°C



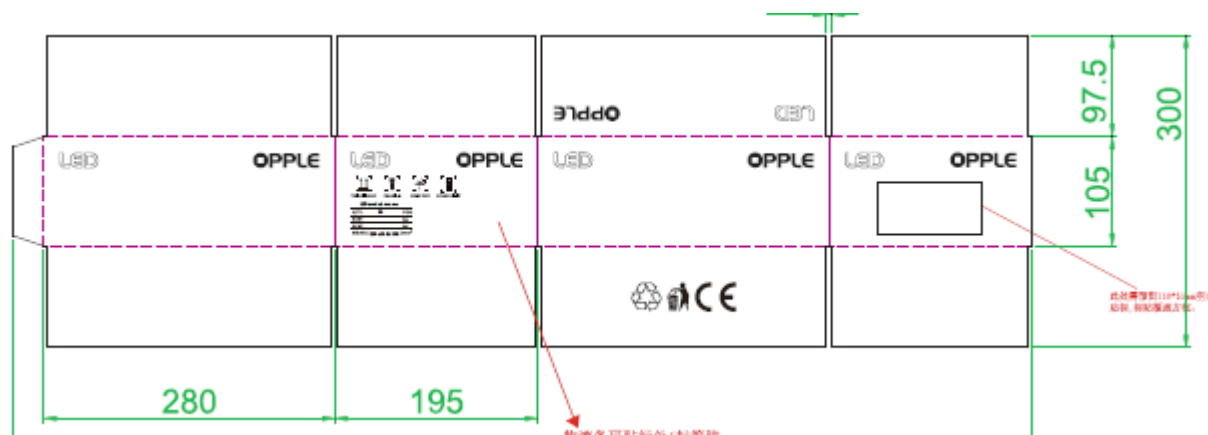
LED Module sensor

Package

Code	Item	Single box (1pcs/box)			Box package : 10pcs/box		
	Item description	Dimensions (H×W×L)	Gross weight (kg)	EAN1	Dimensions (H×W×L)	Gross weight (kg)	EAN2
140060553	LED module sensor CT	40×35×80	0,06	6945730491732	183×87×87	0,58	6945730441720

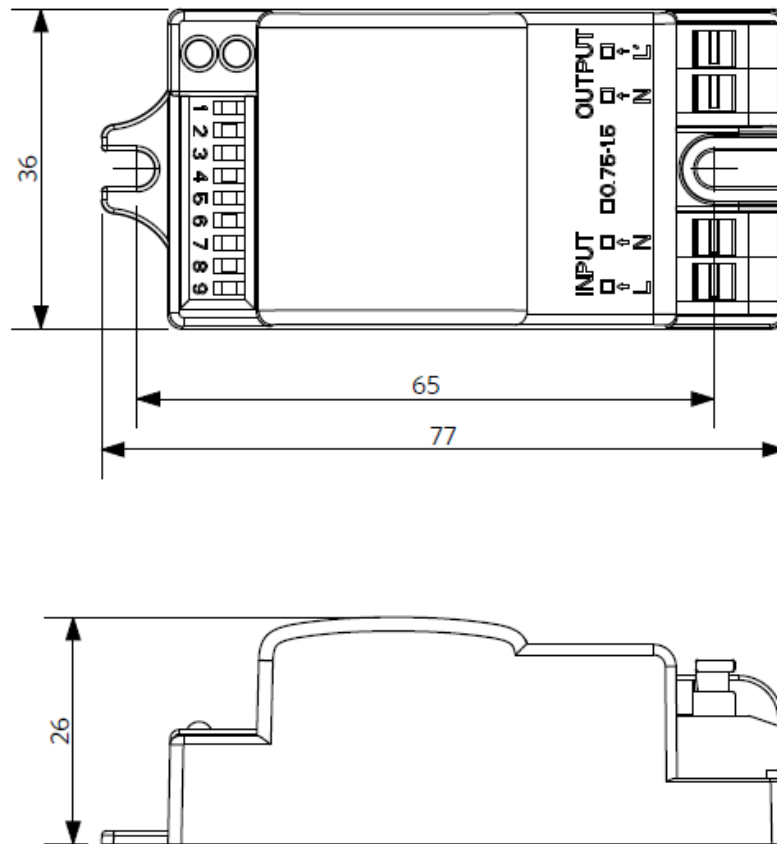


Box package : 30pcs/box		
Dimensions (H×W×L)	Gross weight (kg)	EAN3
280×195×105	1,88	6945730441737



LED Module sensor

Dimensional drawings



LED Module sensor

Install instruction

OPPLE

LED module sensor

Version date sensor
www.opple.com

Art. Code	Family Name	Weight
140051953	Accessory	0,95

①

OFF

②

③

④

Magnetic

⑤

Luminaire

⑥

Luminaire

Data subject to change
Les données sont sujettes à modifications
Änderungen vorbehalten

OPPLE

⑦

286 tape

⑧

⑨

⑩

ON

Opplé Lighting Electronic (Zhongshan) Co., Ltd.
325422
Building A, No.275 Dongan Bei Road,
Heshen District, Guzhou Town,
Zhongshan City, Guangdong, China.

OPPLE Lighting S.p.A.
Manufacturing Sales
66010 S. G. S. S.
The Netherlands
www.opple.com

OPPLE

Sensor compatible module list

SAP code	Family name	Weight/KG
140050766	Cllo	0,18
140054629	Cllo	0,18
140057237	Cllo	0,46
140057238	Cllo	0,46

The compatibility list is based upon testing conducted with OPPLÉ modules. Except OPPLÉ module, the sensor would be still compatible with other ceiling products, the results can vary in certain field application due to a number of factors. In case of doubt regarding the suitability of the application the manufacture of this sensor should be consulted.

Sensor on/off function
Motion sensor + LED driver or ballast (Any brand)

With sufficient light, the lamp doesn't switch on.

With insufficient ambient light, the sensor switches on the lamp when motion is detected.

After hold time, the sensor switches off the lamp when no motion is detected.

Sensor setting
By selecting the combination on the DIP switch, sensor data can be precisely set for each specific application.

ON	1	2	3	4	5	6
I	ON	ON	ON	ON	ON	ON
II	ON	ON	ON	ON	ON	ON
III	ON	ON	ON	ON	ON	ON
IV	ON	ON	ON	ON	ON	ON
V	ON	ON	ON	ON	ON	ON
VI	ON	ON	ON	ON	ON	ON

Detection area
Detection area can be reduced by selecting the combination on the DIP switches to fit precisely each application.

ON	1	2	3	4	5	6
I	ON	ON	ON	ON	ON	ON
II	ON	ON	ON	ON	ON	ON
III	ON	ON	ON	ON	ON	ON
IV	ON	ON	ON	ON	ON	ON
V	ON	ON	ON	ON	ON	ON
VI	ON	ON	ON	ON	ON	ON

Hold time
Refers to the time period the lamp remains at 100% illumination after no motion detected.

ON	1	2	3	4	5	6
I	ON	ON	ON	ON	ON	ON
II	ON	ON	ON	ON	ON	ON
III	ON	ON	ON	ON	ON	ON
IV	ON	ON	ON	ON	ON	ON
V	ON	ON	ON	ON	ON	ON
VI	ON	ON	ON	ON	ON	ON

Daylight sensor
The sensor can be set to only allow the lamp to illuminate below a defined ambient brightness threshold. When set to Disable mode, the daylight sensor will switch on the lamp when motion is detected regardless of ambient light level. 50lux, 25lux: daylight operation, 10lux, 5lux: darkness operation only.

OPPLE

OPPLE Lighting B.V.

*Materiaalweg 6-6a
5681 RJ Best
The Netherlands*

*T: +31 (0) 880 567 890
E: service@opple.com*