

Al Manara Electric المنارة الكهربائية

SINCE 1987

PRODUCT CATALOGUE
2023-2024

Panasonic

OPPLE
See Beyond

fumagalli
SINCE 1973

LUTEC
CONNECTED BY LIGHTING

Midea

Al Manara
Panel Boards Factory Co.



الاختيار الامثل لحياة اسهل
Best Selection For Easy Life

Al Manara Company Profile

Al Manara Electric Started business early 1987, and had has taken care to satisfy its customers and maintain quality ever since. The company employs a highly efficient team with long experience in variety of specialization. The company leads in the field of electrical switches & sockets, Residential and Commercial Panel Boards, In Door/Out Door Lighting, chandeliers & garden illumination. We are agents for International companies in KSA and Middle East such as;

Panasonic: which assure, convenience & safety for the users by Japan Technology "Panasonic" brand electrical switches and sockets, which are available in various colors and styles, ideal for today's living and working environments.

Fumagalli srl Italy: which covers Italian made, all kind of outdoor lighting suitable for Palaces, Villas, Sports Grounds, Parking Areas, and Schools etc. With 25Years guarantee on the materials. Fumagalli is going more popular in the field of outdoor lighting in Saudi Arabia for 1m to 6m high poles in one piece with resin covered galvanized steel material. Fumagalli offers wide range of products in Classic & Modern Design and also includes Bulkheads, step lights, buried and spike lights. Fumagalli also offered its products with LEDs.

Oppl Energy Saving Lamps, LED Lamps & Lighting; Oppl is a Chinese well known Brand in the world and they offer a wide range of lighting product, which insure High quality with guarantee at reasonable price.

Oppl offer products for all type of environments Residential, commercial, Hotels, Airports etc.

The product range includes Ceiling Lights, Chandeliers, Down Lights, Halogen Lamps, Fluorescent Lamps, LED Lamps, LED down Lights, Wall Lights, Mirror Lights. Oppl also offer T5 & T8 florescent & LED fixtures.

LUTEC Outdoor Lighting; One of the top brand in the Outdoor Die-casted Aluminum Garden Lights, Park Lights, Indoor Lights, Flood Lights, Recessed Ground and wall Lights in Classic and Modern Design. Lutec also offers it's lighting with LED Lamps.

Al Manara Panel Board Factory: From 2010 onwards, Al Manara extends from Trading to manufacturing of "Al Manara" brand Panel Boards by utilizing experience of expertise having experience more than 36 Years in the manufacturing of electrical products incorporating the latest technological advancements.

Al Manara factory offers wide range of products including both residential and commercial panels such as Package Substation, Unit Substation, Street Lighting Package Substation, Street Lighting Panel, ATS Panel, Low voltage Switch Gears, Motor Control Centers, KWH Panels, Load Centers, Circuit Breaker enclosures, Bus Bar Chambers, and other custom made panels as per project requirements.

Al Manara Panel Board is an official panel builder for Schneider Electric.

Priding ourselves; by executing our work to the highest standards and quality. We satisfy our customers by excellent quality products, timely delivery and dependable customer services at a fair and competitive price.

Al Manara Branches: Riyadh, Jeddah, Dammam, Al Hassa, Qaseem, Hail, Tabouk, Madina, Yanbou, Makkah, Taif, Najran, Jizan, Khamais Mashyet, Sakakah.

بدأت أعمالها في أوائل عام ١٩٨٧ ومنذ ذلك الوقت وهي تبذل غاية جهدها لإرضاء العملاء والالتزام بالجودة ولهذا قامت بتعيين فريق من الفنيين ذوي الكفاءة العاليه والخبرة الطويله ، كل ذلك يجعلنا واثقين من تنفيذ واتمام أعمالنا وفق اعلي مستويات الجودة والاتقان،

تعمل شركه المناره الكهربائيه كوكيل لمجموعه من أكبر الشركات العالميه لتوزيع منتجاتها في المملكه العربيه السعوديه والشرق الاوسط ، وتتضمن قائمه من منتجاتها افياش ومفاتيح **باناسونيك** الكهربائيه اليابانيه الصنع والمتوفره بمختلف الألوان والشكال التي تناسب جميع الازواق . كما تحتل الشركه مكانه رائده في مجال الاناره والكريستال وإناره الحدائق مما يجعلها تعمل كوكيل للشركه الياباليه **فوماجالي** ذات الجوده العاليه والتي تمنح منتجاتها ضمان ٢٥ عام وهذه الشركه الوحيده بالمملكه العربيه السعوديه التي تمنح مده ضمان كهذا علي منتجات اناره،

وكذلك وكيل لشركه **اوبل** للمبات الموفره للطاقه التي تعتمد في تصنيعها علي الجوده الفائقه المعتمده علي توفير الطاقه لجميع وحدات الاناره الداخليه وكذلك تحقيقها طفره كبيره في مجال اناره ليد مما جعلها في وصف افضل الشركات المصنفة في مجال توفير الطاقه والحائزه علي شهادة ساسو شهادة الجودة السعوديه من هيئة المواصفات والمقاييس، وكذلك شركه **ليوتك** للأناره الخارجيه شركه صينيه تعتمد علي جميع مقاييس الاداء الاوروبيه وجميع منتجاتها الخارجيه ذات التقنيه الفرنسيه،

وتم بحمد الله افتتاح مصنع المنارة للوحات الكهربائيه الحائز علي شهاده ISO او SASO و KEMA وتم انشائه بخبره يابانيه تحت اشراف مهندسين من اليابان وتم اعتماد المصنع في كثير من الجهات الحكوميه لما لديه من قدره علي تحقيق الاعمال

يقدم مصنع المنارة للوحات الكهربائيه مجموعه من المنتجات للقطاعات السكنيه ، التجاريه و المشاريع الحكوميه كاللوحات التوزيع الرئيسيه الكهربائيه ، ومحطات تحويل الجهد المتوسط ، لوحات ومحطات اناره الشوارع ، لوحات التحكم المركزيه ولوحات تحسين معامل القدره ولوحات التحويل الأتوماتيكيه بين أكثر من مصدر، وأيضا لوحات القطاع السكني (لوحات التوزيع الفرعيه - العلبه بالقاطع - صندوق خدمه متعدد المخارج).

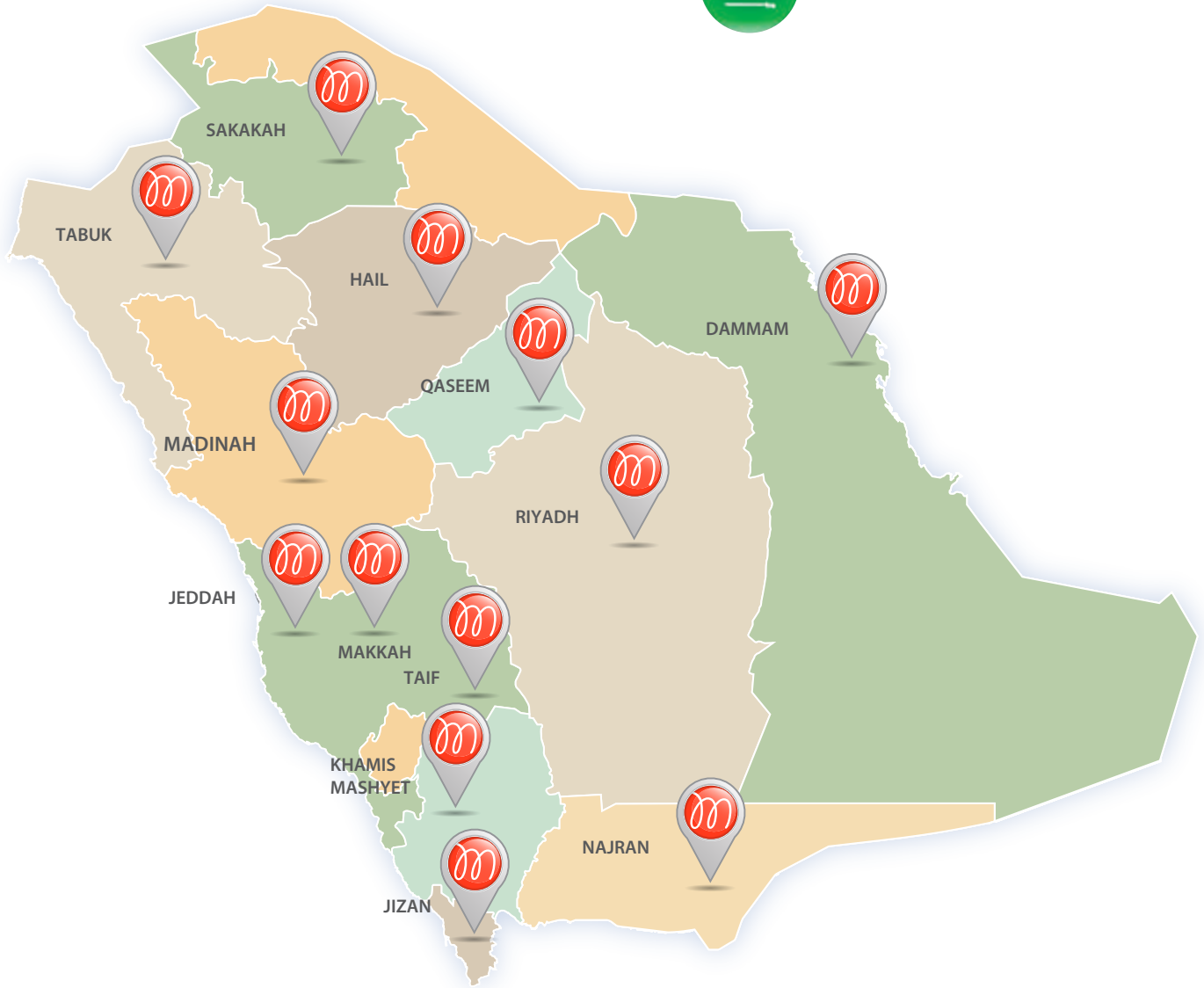
الشراكه

حرصا من إدارة مصنع المنارة علي تقديم أعلي مستويات الجودة لذا وقع الإختيار علي شركة باناسونيك لنكون شركاء في تقديم منتجات المنارة والتي تحمل قواطع باناسونيك ، يعد إسم باناسونيك من العلامات التجاريه اليابانيه واسعه الانتشار بأسيا وأوروبا وأفريقيا وأمريكا الجنوبيه،

OUR BRANCHES



SAUDI ARABIA



SHOWROOM QR CODES

MALAZ SHOWROOM

Al Amir Abd Elmohsen St., Al Malaz
Riyadh



TAKHASSUSSI SHOWROOM

Takasusi St., Crossing Tahliyas St.
Riyadh



QASEEM SHOWROOM

Buraidah - Alsafraa Area,
King Abdulaziz St. - front of Altawan Club



HAIL SHOWROOM

Prince Faysal St., Al Zeraya Area



EMARA SHOWROOM

Emara St., Dammam



FAISAL SHOWROOM

King Faisal Street - opposite Alemara Station
Dammam



NEW BALADEAH SHOWROOM

Al Baladeah St., Jeddah



BALADEAH SHOWROOM

Al Baladeah St., Alkhair Mall Center
Jeddah



PANASONIC SHOWROOM

Al Baladeah St., Saheli Center 1
Jeddah



MAKKAH SHOWROOM

Muzdalifah Branch Road
front of Alnoor Hospital



TAIF SHOWROOM

Khalid Bin Waleed Street



MADINAH SHOWROOM

King Abdullah St. (2nd Ring Road)



TABUK SHOWROOM

Al Khamssen St., front of Al Sehab Hotel



KHAMIS MASHYET SHOWROOM

King Fahad Road
front of Al Ghrawi Market Business Complex



JIZAN SHOWROOM

Airport District, Prince Faisal Bin Fahd St.



NAJRAN SHOWROOM

King Abdulaziz Road
(Next to King Khalid Hospital)





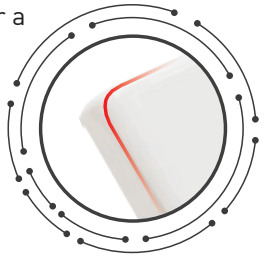
SOCIAL MEDIA ACCOUNTS
MULTI LINK

NEW ARRIVAL
وصل حديثا

Panasonic

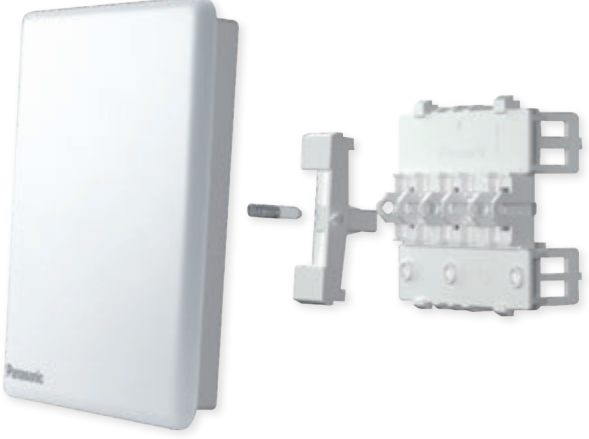
Gentle Rounded Corners

Panel corners are rounded for a gentle and graceful feel.



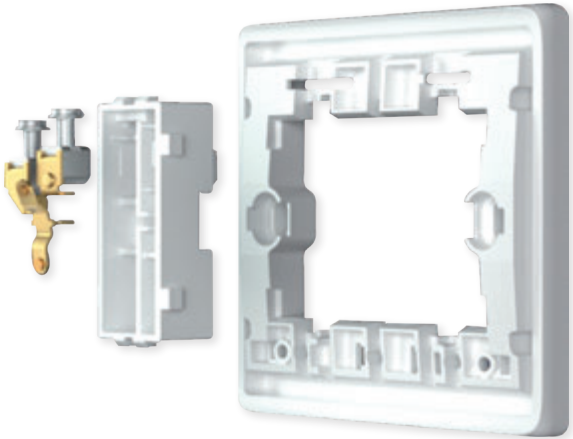
Made with Heat Resistant PC

Made to last using highly heat-resistant polycarbonate material which resists deformation and fading.



Highly Conductive and Eco-friendly Silver Alloy

Made with environmentally friendly alloys that are highly conductive and durable for your safety and peace of mind.



SIMPLUS F

Design-oriented Full Panel Switches.



WSFBC5011W
1-Gang 1-Device
1Way SP Switch
10AX 250V



WSFBC5021W
1-Gang 2-Devices
1Way SP Switch
10AX 250V



WSFBC5031W
1-Gang 3-Devices
1Way SP Switch,
10AX 250V



WSFBC5012W
1-Gang 1-Device
2Way SP Switch
10AX 250V



WSFBC5022W
1-Gang 2-Devices
2Way SP Switch
10AX 250V



WSFBC5032W
1-Gang 3-Devices
2Way SP Switch,
10AX 250V



WSFBC5091W
1-Gang 4-Devices
1Way SP Switch,(7x7)
10AX 250V



WSFBC5014W
1-Gang Intermediate Switch
10AX 250V



WSFBC5511W
1-Gang 1Way SP Push Switch
with "Bell Symbol"
10A 250V



WSFBC5092W
1-Gang 4-Devices
2Way SP Switch,(7x7)
10AX 250V



WSFBC4814W
Curtain Switch



WTFBP51512S-1
1-Gang 2Way Switch
16AX SP
Quick Connect Terminal



WTFBP52522S-1
1-Gang 2-Devices 2Way Switch
16AX SP
Quick Connect Terminal



WTFBP53532S-1
1-Gang 3-Devices 2Way Switch
16AX SP
Quick Connect Terminal



WTFBP5004S-1
1-Gang Intermediate Switch
10AX
Quick Connect Terminal



WTFBP55137S-1
1-Gang 1Way Switch
20A DP
with Indicator



WTFBP5408699S1K
1-Gang 1Way Switch
45A DP
with Indicator



WTFBP5411S-1
1-Gang Push Button, 10A
Quick Connect Terminal



WTFBP5781103S-1
1-Gang Dimmer Switch
1000W, 250V
(Low Voltage Halogen Lamp 800VA)



WTFBP2731S-1
TV Socket F Type



WTFBP2164S-1
Telephone Socket 6P4C



WTFBP24886S-1
LAN Socket Cat 6



WTFBP579120S-1
LED Dimmer Switch
50W 220V



WTFBP1072S-1
2 Port USB Charger
Output Total 2A 5V DC



WTFBP11119S-1
1-Gang 13A, 250V
Switched Socket



WTFBP11129S-1
2-Gang 13A, 250 V
Switched Socket



WTFBP579150S-1
LED Dimmer Switch
200W 220V



WTFBP5781S-1
HOTEL KEY CARD SW.



WTFBP53576S-1
DON'T DISTURB SW.
(CLEAN UP & PUSH SW)

Advanced switching technology



The highly advanced "Slide Cam Mechanism" designed by Panasonic will allow smoother and ON & OFF switching operations. Flatima series has been designed to avoid stagnation of unnecessary particles such as dust.

Firm and appealing Aluminum plate

Panasonic top level series with super panel and vigorous outlines bringing elegance to your everyday life.

Variety of Colors



Silver
[S]



Gold
[Y]



Bronze
[Q]

Elegant mixture of modern design based on a unique collaboration with Japanese designed aluminum plate and stylish dark button to fit with the latest residential trends.



WEBP515117-SS
1G One-Way SP
16AX 250V AC



WEBP525217-SS
2G One-Way SP
16AX 250V AC



WEBP535317K-SS
3G One-Way SP
16AX 250V AC



WEBP545227-SS
4G 2Way SP Switch
10AX 250V



WEBP5414600F-SS
1G 20A DP
20A 250V AC



WNB5428690FK-SS
45A DP (7x7)
Glow Switch DP
45A, 250V AC



WEBP515127-SS
1G Two-Way SP
16AX 250V AC



WEBP525227-SS
2G Two-Way SP
16AX 250V AC



WEBP535327K-SS
3G Two-Way SP
16AX 250V AC



WEBP5513630F-SS
1G Intermediate
4-Way
16A 250V AC



WEBP5113650F-SS
1G Push Button
Push Button "B", SP
10A 300V AC



WEBP579120F-SS
Dimmer 50W 220V
LED



WEBP4519940F-SS
1G Tel Modular Jack
6P 4C, 0.5A 60V AC



WEBP4529682F-SS
Tel Modular + Data Outlet
6P 4C, 0.50A 60V AC (Tel Modular)
CAT6 (RJ 45) Data Outlet



WEBP4519680F-SS
1G Computer Data Outlet
CAT6 (RJ45)



WEBP47164501F-SS
1G F-Type Dish Outlet
7*7



WEBP4726442F-SS
Tel + F Type Dish Outlet
7*7



WEBP579150F-SS
1G 200W 220V
LED DIMMER



WEB11119W-SS
1G Receptacle with Switch, DP
13A 250V AC



WEB11114-SS
1G 13A Socket 250A
with USB Charger (7x7)



WEB11129W-SS
2G Receptacle with Switch, DP
13A 250V AC



WEBP52832-SS
For Window Shutter
2 Way SP 15AX 250C AC
Push Button 10A 250V AC



WEBP47266871F-SS
Data RJ45 + F Type Dish Outlet
7*7



WEBP5781530F-SS
Dimmer Switch
(500W Incandescent)
(500VA LV Halogen)
220-240V 50/60HZ



WEBP515117-BB
1G One-Way SP
16AX 250V AC



WEBP525217-BB
2G One-Way SP
16AX 250V AC



WEBP535327K-BB
3G One-Way SP
16AX 250V AC



WEBP515117-YY
1G One-Way SP
16AX 250V AC



WEBP525217-YY
2G One-Way SP
16AX 250V AC



WEBP535327K-YY
3G One-Way SP
16AX 250V AC



WEBP515117MB-BB
1G One-Way SP
16AX 250V AC



WEBP525217MB-BB
2G One-Way SP
16AX 250V AC



WEBP535317MBK-BB
3G One-Way SP
16AX 250V AC



WEBP515117MB-YY
1G One-Way SP
16AX 250V AC



WEBP525217MB-YY
2G One-Way SP
16AX 250V AC



WEBP535317MBK-YY
3G One-Way SP
16AX 250V AC



WEBP515117MB-SS
1G One-Way SP
16AX 250V AC



WEBP525217MB-SS
2G One-Way SP
16AX 250V AC



WEBP535317MBK-SS
3G One-Way SP
16AX 250V AC

Panasonic

High level color coordination taking your living environment to the next level.

Variety of Colors



Black
EB



Metallic
White
MW



Metallic
Pearl White
MWZ



Metallic
Gray
MH



Metallic
Gold
MY



Metallic
Brown
MF



Metallic
Dark Brown
MA



Metallic
Black
MB



FULL-COLOR
WIDE
SERIES
Refina

BS-TYPE



WEBP515117MF
1G One-Way SP
16AX 250V AC



WEBP525217MF
2G One-Way SP
16AX 250V AC



WEBP535317MFK
3G One-Way SP
16AX 250V AC



WEBP5414600MF
1-Gang 1-Device
20A DP Switch with Indicator



WNBP5428690MFK
45A DP (7x7)
Glow Switch DP with Indicator
45A, 250V AC



WEBP515127MF
1G Two-Way SP
16AX 250V AC



WEBP525227MF
2G Two-Way SP
16AX 250V AC



WEBP535327MFK
3G Two Way SP
16AX 250V AC



WEBP545227MF
4G 2Way SP Switch
10AX 250V



WEB7020MF
Cable Outlet
45A with Terminal Block



WNBP5448690MFK
45A DP (7x14)
Glow Switch DP with Indicator
45A, 250V AC



WNPB5110630MFK
1G One-Way Switch
16AX 250V



WNPB5120630MFK
2G One-Way Switch
16AX 250V



WNPB5130630MFK
3G One-Way Switch
16AX 250V



WNPB5140630MFK
4G One-Way SP
16AX 250V AC



WNPB5141613MF
2G Twin Switch SP
10A 250V AC



WEBP5113650MF
1G Push Button
10AX 250V



WEBP579120MF
1G 50W 220V
LED Dimmer



WEBP579150MF
1G 200W 220V
LED Dimmer



WEBP5781530MF
Dimmer Switch
(500W Incandescent)
(500VA LV Halogen)
220V-240V 50/60HZ



WNPB5181610MF
4G One-WayTwin Switch
10A 250V



WEBP52832MF
Window Shutter Switch
2-Way SP 15AX 250V AC
Push Button 10A 250V AC



WEBP5513630MF
1G Intermediate
4-Way
16A 250V



WEBP4519940MF
1G Tel Modular Jack
6P 4C, 0.5A 60V AC



WEBP4529940MF
2G Tel Modular Jack
6P 4C, 0.5A 60V AC



WEBP4529649MF
Tel Modular + Data Outlet
6P 4C, 0.50A 60V AC (Tel Modular)
CAT6 (RJ 45) Data Outlet



WEBP4519680MF
1G Computer Data
CAT6 (RJ45)



WEBP4529680MF
2G Computer Data
CAT6 (RJ45)



WEBP47164501MF
1G F Type Dish Outlet
7*7



WEBP13117MF
1G DP Un-Switched Socket
13A 250V



WEB11115MF
13A Socket 250V AC +
2 Port USB Charger
Output 2A 5V DC



WNPB1072MF-1
2 Port USB Charger
Output 2A 5V DC



WEBP4726442MF
Tel + F Type Dish Outlet
7*7



WEB17419MF
1G RCD Receptacle
with Switch, DP
13A 250V AC



WEBP47266871MF
Data RJ45 + F Type Dish Outlet
7*7



WEB11119MF
1-Gang DP Switched
Socket Outlet with Plate
13A 250V



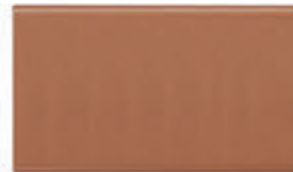
WEB11129MF
2-Gang DP Switched
Socket Outlet with Plate
13A 250V



WEB11114MF
1G 13A Socket 250A
with USB Charger (7x7)



WZB7891MF
1G Blank Plate
7*7



WZB7892MF
2G Blank Plate
7*14

Panasonic

Sharp design fitting beautifully with residential atmosphere as well as business environment.



Provide Safety from electric shock

EL Guard



BS-TYPE
FULL-COLOR
WIDE
SERIES



WEBP515117
1G One-Way SP
16AX 250V AC



WEBP525217
2G One-Way SP
16AX 250V AC



WEBP535317K
3G One-Way SP
16AX 250V AC



WEBP5414600F
1G 20A DP
20A 250V AC



WNP5428690FK
45A DP (7x7)
Glow Switch DP
45A, 250V AC



WEBP515127
1G Two-Way SP
16AX 250V AC



WEBP525227
2G Two-Way SP
16AX 250V AC



WEBP535327K
3G Two-Way SP
16AX 250V AC



WEBP545227
4G 2Way SP Switch
10AX 250V



WEB7020W
Cable Outlet
45A with Terminal Block



WNP5448690FK
45A DP (7x14)
Glow Switch DP
45A, 250V AC



WNPB5110630FK
1G One-Way Switch
16AX 250V



WNPB5120630FK
2G One-Way Switch
16AX 250V



WNPB5130630FK
3G One-Way Switch
16AX 250V



WNPB5140630FK
4G One-Way SP
16AX 250V AC



WNPB5141610DF
2G Twin Switch SP
10A 250V AC



WEBP5113650F
1G Push Button
Push Button "B", SP
10A 300V AC



WEBP579120F
Dimmer 50W 220V
LED



WEBP579150F
1G 200W 220V
LED DIMMER



WEBP5781530F
Dimmer Switch
(500W Incandescent)
(500VA LV Halogen)
220-240V 50/60HZ



WNPB5181610F
4G 1-WayTwin Switch
10A 250V



WEBP52832-SP
For Window Shutter
2 Way SP 15AX 250C AC
Push Button 10A 250V AC



WEBP5513630F
1G Intermediate
4-Way
16A 250V AC



WEBP4519940F
1G Tel Modular Jack
6P 4C, 0.5A 60V AC



WEBP4529940F
2G Tel Modular Jack
6P 4C, 0.5A 60V AC



WEBP4529682F
Tel Modular + Data Outlet
6P 4C, 0.50A 60V AC (Tel Modular)
CAT6 (RJ 45) Data Outlet



WEBP4519680F
1G Computer Data Outlet
CAT6 (RJ45)



WEBP4529680F
2G Computer Data Outlet
CAT6 (RJ45)



WEBP47164501F
1G F-Type Dish Outlet
7*7



WEBP13117W
1G DP Un-Switched Socket
13A 250V



WEB111159W
13A DP Sw. Socket +
2 Port USB Charger 2A 5V DC



WNP1072W-1
2 Port USB Charger
Output 2A 5V DC



WEBP4726442F
Tel + F Type Dish Outlet
7*7



WEB17419W
1G RCD Socket Outlet
with Sw. DP 13A 250V AC



WEBP47266871F
Data RJ45 + F Type Dish Outlet
7*7



WEB11119W
1G Receptacle with Switch, DP
13A 250V AC



WEB11129W
2G Receptacle with Switch, DP
13A 250V AC



WEB11114
1G 13A Socket 250A
with USB Charger (7x7)



WZB7891W
1G Blank Plate
7*7



WZB7892W
2G Blank Plate
7*14

Panasonic

Simple and screw less design easy to blend with any of your personal interior ideas.

Variety of Colors



Beige



BS-TYPE FULL-COLOR Series



WBNP515117
1G One-Way SP
16AX 250V AC



WBNP525217
2G One-Way SP
16AX 250V AC



WBNP535317K
3G One-Way SP
16AX 250V AC



WBNP5414630-SP
1G 20A DP with NEON
Mark "Water Heater"
20A 250V AC



WBNP5428690K
45A DP (7x7)
Glow Switch, DP
45A, 250V AC



WBNP515127
1G Two-Way SP
16AX 250V AC



WBNP525227
2G Two-Way SP
16AX 250V AC



WBNP535327K
3G Two-Way SP
16AX 250V AC



WBNP545227
4G 2Way SP Switch
10AX 250V



WEB7020
Cable Outlet
45A with Terminal Block



WBNP5448690K
45A DP (7x14)
Glow Switch, DP
45A, 250V AC



WBNP579120FC
Dimmer 50W 220V
LED



WBNP579150FC
1G 200W 220V
LED DIMMER



WBNP5781530
Dimmer Switch (500W Incandescent)
(500VA LV Halogen)
220-240V 50/60HZ



LW5229694
For Window Shutter
2 Way SP 15AX 250C AC
Push Button 10A 250V AC



WBNP5513630-SP
1G Intermediate SW
(4-Way)
16AX 250V AC



WBNP5113650-SP
1G Push Button
Push Button 1-Way, SP
10A 250V AC



WBNP5110630K
1G One-Way SP
16AX 250V AC



WBNP5120630K
2G One-Way SP
16AX 250V AC



WBNP5130630K
3G One-Way SP
16AX 250V AC



WBNP5140630K
4G One-Way SP
16AX 250V AC



WBNP5513630
Intermediate
1G, 4-Way
10A 300V AC



WBNP5113650
1G Push Button
Push Button "B", SP
10A 300V AC



WBNP5210630K
1G Two-Way SP
16AX 250V AC



WBNP5220630K
2G Two-Way SP
16AX 250V AC



WBNP5230630K
3G Two-Way SP
16AX 250V AC



WBNP5181610D
4G Twin Switch SP
10A 250V AC



WBNP5141610D
2G Twin Switch SP
10A 250V AC



WBNP4519940
1G Tel. Modular Jack
6P 4C, 0.5A 80V AC



WBNP13117
1G DP Un-Switched Socket
13A 250V



WNB111159
13A DP Sw. Socket +
2 Port USB Charger 2A 5V DC



WBNP1072-1
2 Port USB Charger
Output 2A 5V DC



WBNP4519680
1G Computer Data Outlet
CAT6 (RJ45)



WBNP4529649
Tel + Computer Data Outlet
6P 4C 0.5A 80V AC (Tel Modular)
CAT6 (RJ45) Data Outlet



WBNP4716450
1G F-Type
TV Outlet



WNB11119
1G Receptacle with Switch, DP
13A 250V AC



WNB11129
2G Receptacle with Switch, DP
13A 250V AC



WNB11114
1G 13A Socket 250A
with USB Charger (7x7)



WBNP1741
1G RCD Receptacle
with Switch, DP
13A 250V AC



WBNP4726442
Tel + F Type Dish Outlet
7*7



WEJ9111W
13A Plug BS 1363

Panasonic

SIMPLUS



Smooth Pressing Feel

A carefully crafted design with a smoothly curved touch.



A Wide, Easy-to-Press Button

A wide button design makes pressing easy even when your hands are full or the room is dark.



A Simple Design to Match Every Room Interior

A flat design with no installation holes fits well with a variety of room interior designs.



White

W



Beige

F





WSBC5011 W/F
1-Gang 1-Device
1Way SP Switch
10AX 250V



WSBC5021 W/F
1-Gang 2-Devices
1Way SP Switch
10AX 250V



WSBC5031 W/F
1-Gang 3-Devices
1Way SP Switch,
10AX 250V



WSBC5091 W/F
1-Gang 4-Devices
1Way SP Switch,(7x7)
10AX 250V



WSBC5041 W/F
2-Gang 4-Devices
1Way SP Switch, (7x14)
10A 250V



WSBC5012 W/F
1-Gang 1-Device
2Way SP Switch
10AX 250V



WSBC5022 W/F
1-Gang 2-Devices
2Way SP Switch,
10AX 250V



WSBC5032 W/F
1-Gang 3-Devices
2Way SP Switch,
10AX 250V



WSBC5092 W/F
1-Gang 4-Devices
2Way SP Switch, (7x7)
10AX 250V



WSBC5042 W/F
2-Gang 4-Devices
2Way SP Switch, (7x14)
10A 250V



WSBC5413 W/F
1-Gang 45A DP Switch
with Indicator,
45A 250V (7x14)



WSBC5014 W/F
1-Gang Intermediate Switch,
10AX 250V



WSBC5511 W/F
1-Gang 1Way SP Push Switch,
with "Bell Symbol"
10A 250V



WSBC4213 W/F
1-Gang 2Way
Push On/Off 1000W Dimmer
220V-240V 50/60Hz



WSBC4211 W/F
1-Gang 2Way
Push On/Off 500W Dimmer
220V-240V 50/60Hz



WSBC5313 W/F
1-Gang 20A DP Switch Marked
"WATER HEATER"
with Indicator,
20A 250V



WSBC5403 W/F
1-Gang 45A DP Switch
with Indicator,
45A 250V (7x7)



WSBC1210 W/F
1-Gang Socket, Unswitched,
13A 250V



WSBC1220 W/F
2-Gang Socket, Unswitched,
13A 250V



WSBC3217 W/F
1-Gang
CAT6 RJ45



WSBC3227 W/F
1-Gang 2-Devices
CAT6 RJ45



WSBC3118 W/F
1-Gang Telephone Socket
RJ11/12 6P4C



WSBC3128 W/F
1-Gang 2-Devices
Telephone Socket
RJ11/12 6P4C



WSBC1212 W/F
1-Gang DP Switched Socket,
13A 250V



WSBC1222 W/F
2-Gang DP Switched Socket,
13A 250V



WSBC3011 W/F
1-Gang TV Socket
F Type



WSBC1228 W/F
Socket Outlet Residual Current Device
13A 220V-240V



WSBC3021 W/F
1-Gang 2-Devices TV Socket
F Type



WSBC3818 W/F
1-Gang TV Socket F Type +
Telephone Socket RJ11/12 6P4C



WSBC1214 W/F
1-Gang DP Switched Socket
with Indicator,
13A 250V



WSBC1224 W/F
2-Gang DP Switched Socket
with Indicator,
13A 250V



WSBC1017W
1-Gang DP Switched Socket
with USB Charger
Switch: 13A 250V
USB Charger: 2.1A 5V



WSBC6120 W/F
Cooker Control Unit 45A DP Switch +
13A DP Switched Socket with Indicator



WSBC4814 W/F
Curtain Switch



WSBC7010 W/F
1-Gang Cable Outlet with
20A Terminal Block



WSBC7020 W/F
1-Gang Cable Outlet with
45A Terminal Block



WSBC1016W
13A 250V Socket + 3.1A 5V
Double USB Charger



WSBC8010 W/F
Blank Plate
1-Gang



WSBC8020 W/F
Blank Plate
2-Gang

Panasonic

Original design base with a wide range of items for multi-design coordination.

Variety of Colors



Harmony **BS-TYPE**



WBC5011
 10A Plate Switch
 1G, 1-Way SP
 10AX 250V~



WBC5041
 10A Plate Switch
 4G, 1-Way SP
 10AX 250V~



WBC5021
 10A Plate Switch
 2G, 1-Way SP
 10AX 250V~



WBC5061
 10A Plate Switch
 6G, 1-Way SP
 10AX 250V~



WBC5031
 10A Plate Switch
 3G, 1-Way SP
 10AX 250V~



WBC5012
 10A Plate Switch
 1G, 2-Way SP
 10AX 250V~



WBC5042
 10A Plate Switch
 4G, 2-Way SP
 10AX 250V~



WBC5022
 10A Plate Switch
 2G, 2-Way SP
 10AX 250V~



WBC5062
 10A Plate Switch
 6G, 2-Way SP
 10AX 250V~



WBC5032
 10A Plate Switch
 3G, 2-Way SP
 10AX 250V~



WBC5413
 45A Plate Switch
 DP w/ Neon
 45A 250V~ (7x14)



WBC5014
 10A Plate Switch
 1G, Intermediate
 10AX 250V~



WBC5511
 Push Switch
 1G, 1-Way SP w/ Bell Symbol
 10A 250V



WBC5203
 20A Plate Switch
 1-Gang, DP
 20A 250V~



WBC6120
 Cooker Control Unit
 45A, Switch, DP, DP Switched w/ Neon
 13A 250V~



WBC5303
 20A Plate Switch
 1G, DP with Neon
 20AX 250V~



WBC5403
 45A Plate Switch
 DP w/ Neon
 45A 250V~ (7x7)



WBC4211
 Dimmer Switch
 1G, 2-Way Push On/Off 500W
 230V~50/60Hz



WBC4221
 Dimmer Switch
 1G, 2-Way Push On/Off 400Wx2
 230V~50/60Hz



WBC4530
 Fan Controller
 1G, 1-Way Rotary On/Off 500W
 230V~50/60Hz



WBC3118
 Telephone Socket
 1G RJ11/12



WBC3128
 Telephone Socket
 2G RJ11/12 6P4C



WBC5313
 20A Plate Switch
 Marked "Water Heater"
 20AX 250V~(with Neon)



WBC7010
 Cable Outlet
 with 20A
 Terminal Block



WBC7020
 Cable Outlet
 with 45A
 Terminal Block



WBC7102
 13A Fused Connection Unit
 1G, DP Switched,
 13A 250V



WBC7103
 13A Fused Connection Unit with Lamp
 1G, DP Switched,
 13A 250V



WBC3227
 Data Socket
 2G RJ45 CAT6



WBC3217
 Data Socket
 1G RJ45 CAT6



WBC1214
 13A Socket Outlet with Indicator
 1G, DP Switch with Neon
 13A 250V~



WBC1224
 13A Socket Outlet with Indicator
 2G, DP Switched
 13A 250V~



WBC1016
 13A 250V Socket + 3.1A 5V
 Double USB Charger



WBC3011
 1G TV Socket
 F Type



WBC3818
 TV Socket
 F Type + Tel Socket
 RJ11/12 6P4C



WBC3878
 Data Socket + Telephone Socket
 CAT6 (RJ45)
 Telephone Socket RJ11/12 6P4C



WBC1212
 13A Socket Outlet
 1G, DP Switched
 13A 250V~



WBC1222
 13A Socket Outlet
 2G, DP Switched
 13A 250V~



WBC1210
 1G Un-Switched Socket Outlet
 13A DP 250V AC



WBC8020
 Blank Plate
 2-G



WBC8010
 Blank Plate
 1G

New innovation with
New energy-saving lighting control.

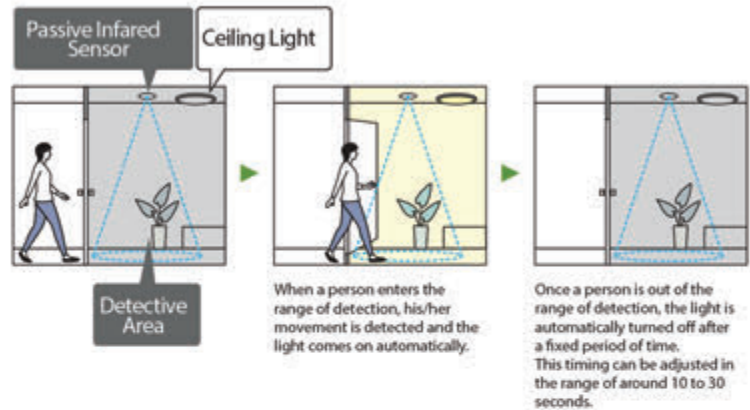
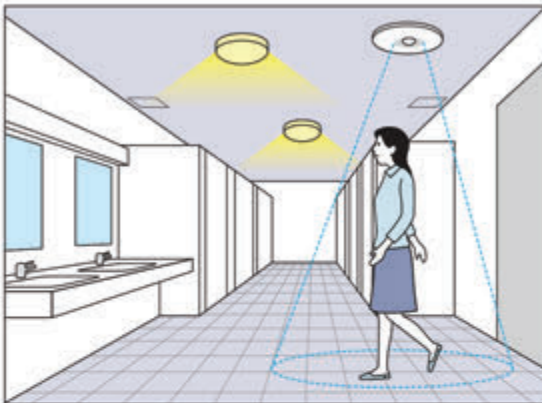


PASSIVE INFRARED SENSOR

Lighting controls intended to conserve energy.

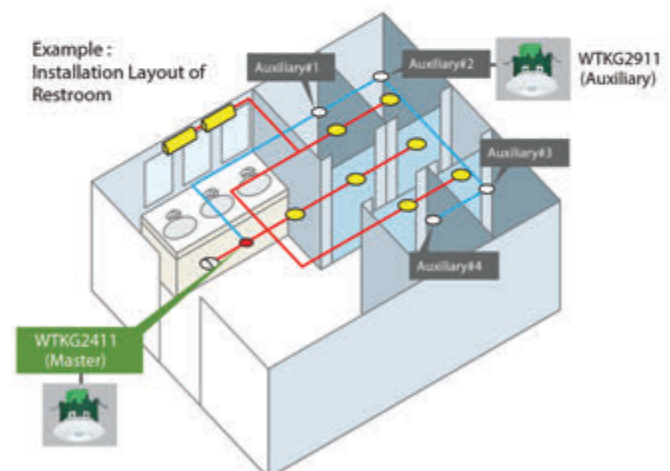
The sensor detects movement and ambient brightness, and automatically turns the lights On or Off. You no longer need to worry about forgetting to turn the lights off.

FULL-COLOR
WIDE
SERIES



The detection area can be increased by connecting the maximum of 4 Auxiliary units with Master unit.

Applicable location
Dividing area (restroom,locker) and corridor.

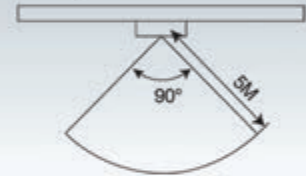


Sensor Switch

WEBFP57311W-SA
White (Wall Mounted)



Rating	220V-240V Incandescent lamp 300W Fluorescent lamp 100W
Time-Out Delay	45 seconds - 75 seconds
Daylight Sensor	Less than 15 lux
Installation	1.2 m-1.6 m high



Ceiling Mounted Sensor - Master

WTKG2411
White



Rating	3A 220-240V~, Incandescent Lamp 660W Fluorescent Lamp 330W
Applicable Standard	IEC60669-2-1
Ambient Temperature	-10℃ — +40℃
Applicable Wire	Rigid Copper Conductor 1.5mm ² - 2.5mm ²
Size of Installation Hole(cm)	Ø7cm (+0.5cm)
Applicable Box	Square Box (Depth : 2 inches or more) Octagon Box (Depth : 2 inches or more)
Time-Out Delay	10 seconds - 30 minutes
Detectable Movement Speed	0.3m/seconds - 1.0m/seconds
Temperature of Detection	4°C or more

Ceiling Mounted Sensor - Auxiliary

WTKG2911
White



Rating	12V DC (Must be connect with only WTKG2411) can not connect with lamp
Applicable Standard	IEC60669-2-1
Ambient Temperature	-10℃ — +40℃
Applicable Wire	Rigid Copper Conductor 1.5mm ² - 2.5mm ²
Size of Installation Hole(cm)	Ø7cm (+0.5cm)
Applicable Box	Square Box (Depth : 2 inches or more) Octagon Box (Depth : 2 inches or more)
Time-Out Delay	Depend on time out delay of master
Detectable Movement Speed	0.3m/seconds - 1.0m/seconds
Temperature of Detection	4°C or more

Ceiling Mounted Sensor

WTKG2310-P
White



Rating	3A 220V-240V~
Applicable Standard	IEC60669-2-1
Ambient Temperature	-10℃ — +40℃
Applicable Wire	Rigid Copper Conductor 1.5mm ² - 2.5mm ²
Size of Installation Hole(cm)	Ø7cm (+0.5cm)
Applicable Box	Square Box (Depth : 2 inches or more) Octagon Box (Depth : 2 inches or more)
Time-Out Delay	Fixed 1 minute
Detectable Movement Speed	0.3m/seconds - 1.0m/seconds
Light Sensor	None
Temperature of Detection	4°C or more

Special Functions



Floor Box-3 Compartments for concrete floor

DUMF6202LT-1

The three-compartment floor box for British Standard power and data outlets, flexible combination for various applications

SIMPLE LID REVERSING

Quick and easy releasing lid by moving it to the unlock position

OPTIONAL DEVICES DIRECTION

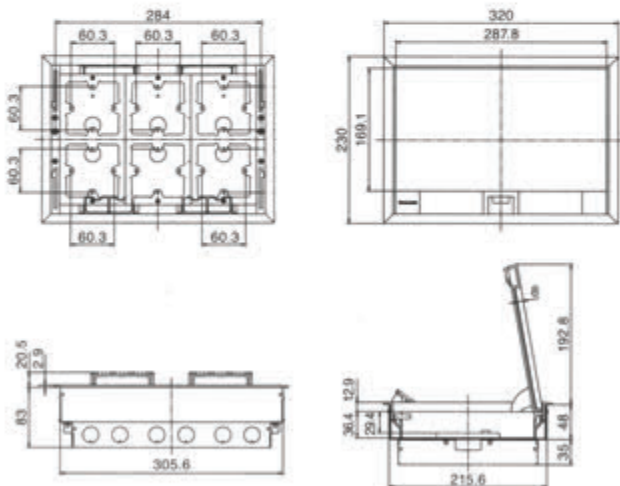
Power and Data devices can be adjusted to 4 directions (for single devices)

6 DEVICES MOUNTABLE

Multiple combination of Power and Data up to 6 modules maximum



Dimension



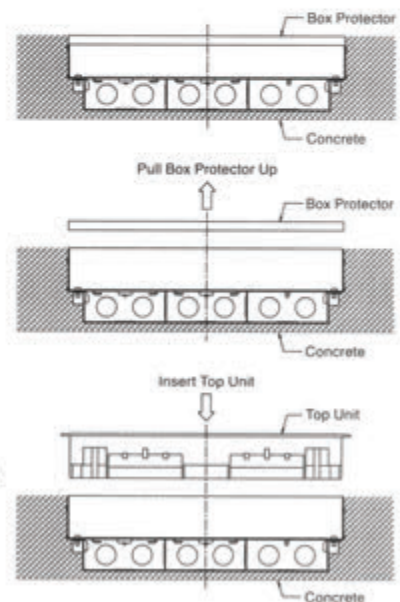
Installation

How To Mount

After putting the concrete on, make the hole to install the product.

(1) Take the box protector off

(2) Insert the Floor Outlet Unit





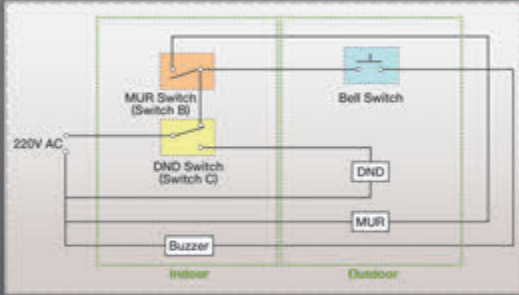
WSBC9631W
Push Button with Don't Disturb and Make up Room signs Lamps



WSBC9220W
1G 2-Way SP (Don't Disturb)
1G 1-Way SP (Make Up Room)



WSBC9810W
Card Switch
16A 220V AC (15-30G Off Delay)



WBC9120/WSBC9120
Shaver Socket
Input 220-250V AC
Output 230V/115V



EBG888K/EBG889
Door Chime 220 AC
Easy to hear 82dB Chime

Floor Outlet Aluminium Series



Safety

Water and Dust Protection

This product conforms with the water and dust protection level **IP44** (IEC60529) by the cover are closed.

IP44 Harmful ingress of water: **Level 4**
Protection against splashing water (No damage by water splash from any direction)

Harmful ingress of solid obstacles: **Level 4**
Protection against substance bigger than 1.0 mm. (No entry of fine cable, cloth, paper, board pieces)

Damage Protection

When the covers are closed, receptacles & plugs are stored inside of floor outlets. It prevents damage caused by fall of fallen objects and treading.



Panasonic®

WHITE

For Indoor Use Only
استخدام في الأماكن المغلقة فقط

BS 13A EXTENSION CORD WITH SAFETY SHUTTERS & BREAKER,

3 SOCKETS, 2-PORT USB CHARGER WITH MAIN SWITCH

توصيلة كهربائية مع غالق امان وقطع كهرباء 3 أفيثس / 2 USB

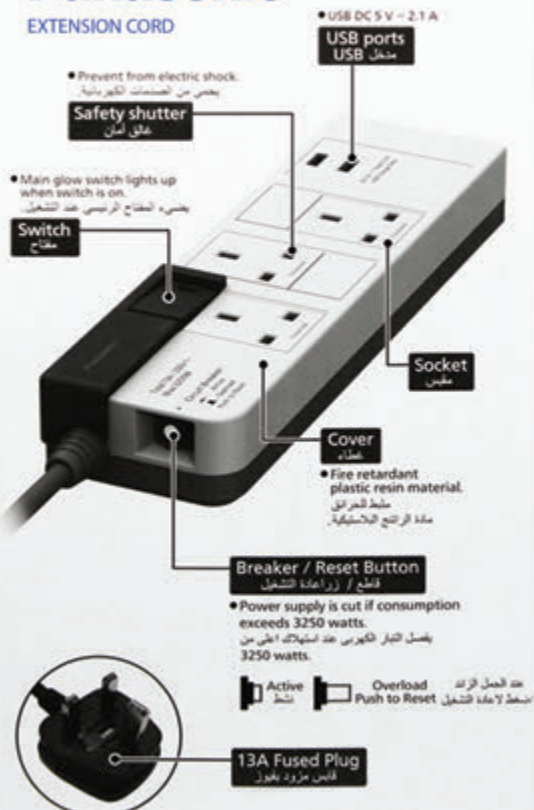
4 SOCKETS, WITH MAIN SWITCH

توصيلة كهربائية مع غالق امان وقطع كهرباء 4 أفيثس

Max. 3250 W 13 A 250 V ~

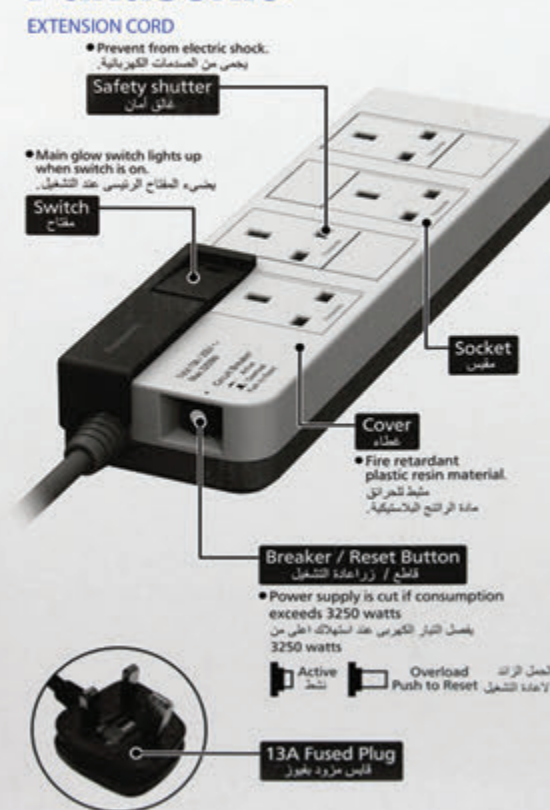
Panasonic®

EXTENSION CORD



Panasonic®

EXTENSION CORD



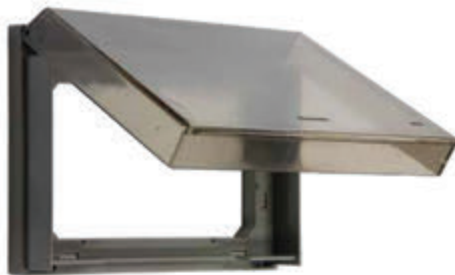
Outdoor plate with excellent weather proof resistance.



WEATHERPROOF SERIES



WBG8981-P
1-Gang Weather Proof Cover Plastic
BS - Type -IP55



WBG8982-P
2-Gang Weather Proof Cover Plastic
BS -Type - IP55



WBC8981W-SA
Plastic Weatherproof Plate for
Switches with
7x7 cm Size Plates (IP54)



WEG8981-P
Weather Proof Cover
A-Type Plastic IP55




WEG8881-P
Weather Proof Cover
A-Type Metal IP55



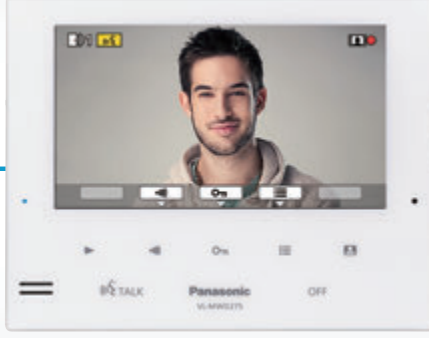
Flexible and
convenient solutions
that work for you.

سهولة الرؤية والتحدث



Up to 2

Door Station
VL-V524L



Arabic Available

7-inch Wide Screen

Up to 3*2
(not including the main monitor)

Main Monitor Station
VL-MWD275



Up to 6*2

Wireless Monitor Station
VL-WD613

< 2 Wire*1 >

*1 Easy installation by simply replacing existing doorbell unit Nonpolar 2-wire system.
*2 A total of up to 6 sub monitors and extension monitors can be registered to the main monitor.

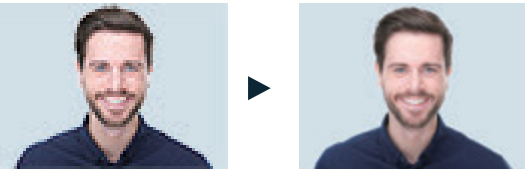
شاشة متحركة / قابلة للتوسعة (DECT)



- يمكنك استخدام الشاشة اللاسلكية لرؤية الزائر والتحدث معه من أي مكان داخل المنزل
- يمكنك توصيل حتى 6 شاشات لاسلكية، والحد الأقصى للمسافة 100 متر بدون أي عوائق

جودة صورة عالية

- الكاميرا الخارجية تعطي جودة 1.3 ميجا بيكسل تعطي صورة أكثر وضوحاً



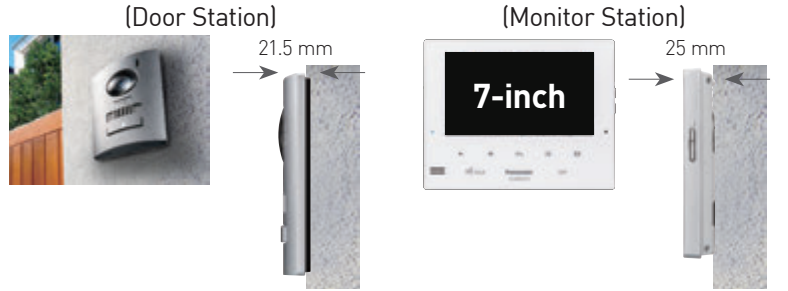
Pictures are simulated.

خصائص أخرى

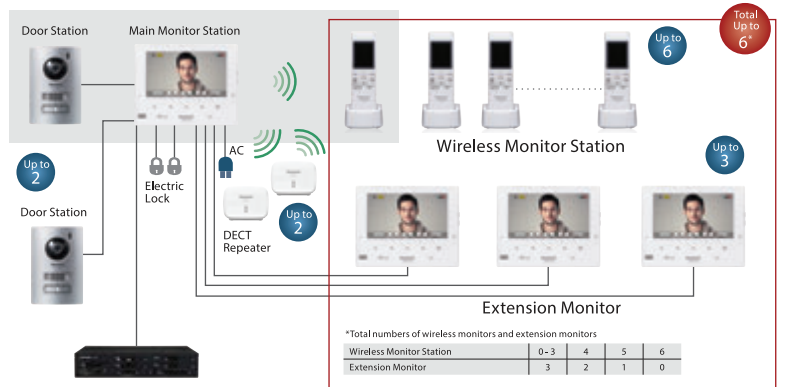
- يدعم فك قفل الباب الكهربائي (يحتاج لمحول كهرباء 12 فولت أو 24 فولت)
- ميزة غير الصوت بلمسة واحدة
- تسجيل الصور (ذاكرة داخلية تسجل 50 زائر ولكل زائر 4 صور)
- مكالمة داخلية بين الشاشات
- الرؤية الليلية

تصميم جديد ومتطور

- شاشة مسطحة بالكامل مع مفاتيح استشعار تعمل باللمس
- الكاميرا الخارجية منحنية وتظهر بشكل معدني يتناسب مع مدخل المنزل



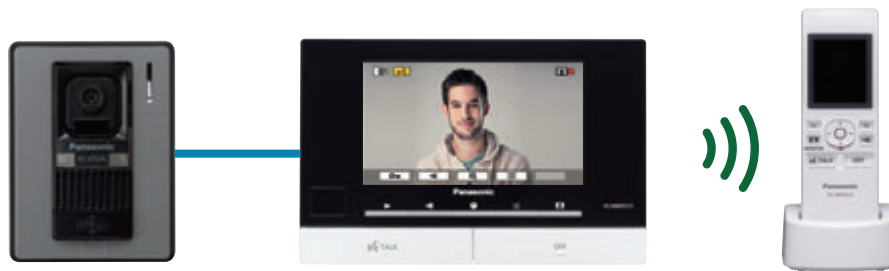
Connection Overview



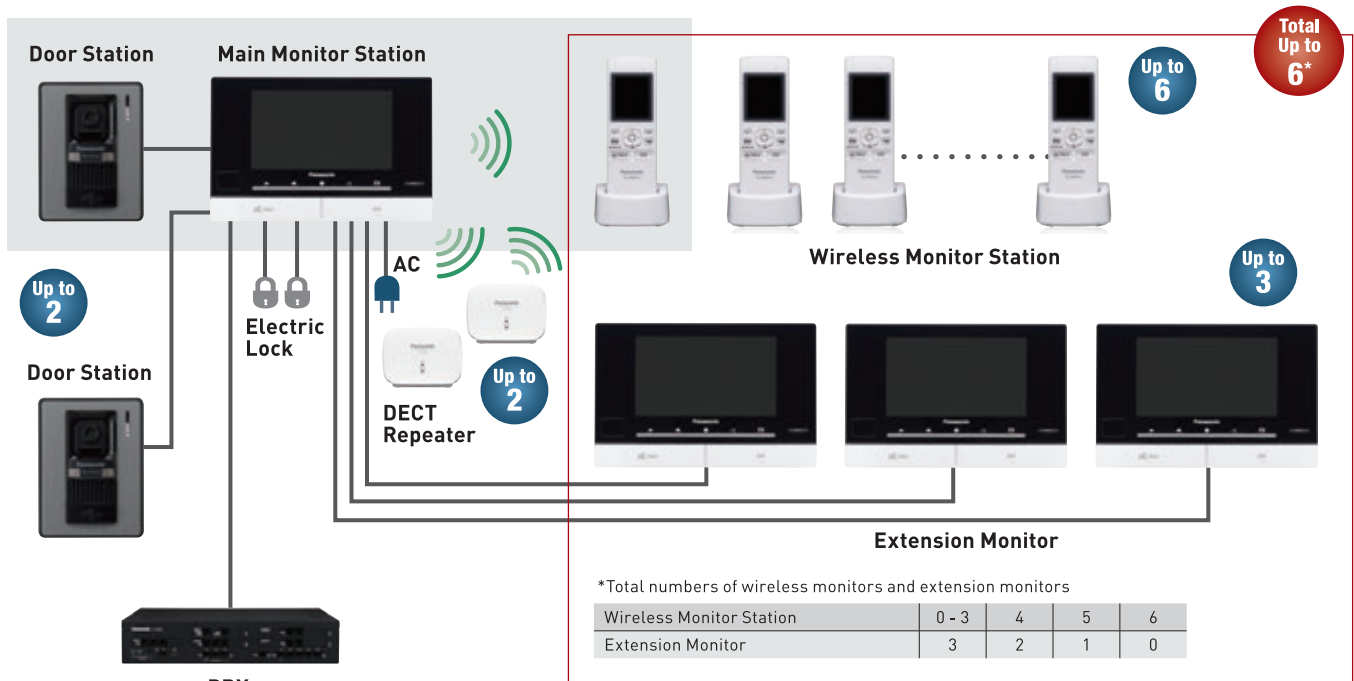


تصميم جديد ومتطور

- يمكنك إضافة ٣ شاشات ٧ بوصة و ٣ شاشات لاسلكية
- شاشة لاسلكية تمكنك من الرد على الزائر من أي مكان داخل المنزل
- شاشة رئيسية عريضة ٧ بوصة ملونة



Connection Overview





All pictures have been graphically illustrated to simulate the mirror effect. The operation screen is displayed on the LCD during operation.



تصميم جديد ومتطور

- شاشة V بوصة مسطحة بالكامل مع مفاتيح استشعار تعمل باللمس

كاميرا بجودة ١.٣ ميغا بيكسل تعطي صورة أكثر وضوحا

قابل للتوسعة بشكل كبير

- يمكن توصيل ٣ شاشات إضافية بالشاشة الرئيسية



* The colours of these products look different from the catalog depending on the angle and light source.



تصميم متطور



- شاشة 7 بوصة مسطحة بالكامل مع مفاتيح استشعار تعمل باللمس

كاميرا بجودة ١.٣ ميغا بيكسل تعطي صورة أكثر وضوحا



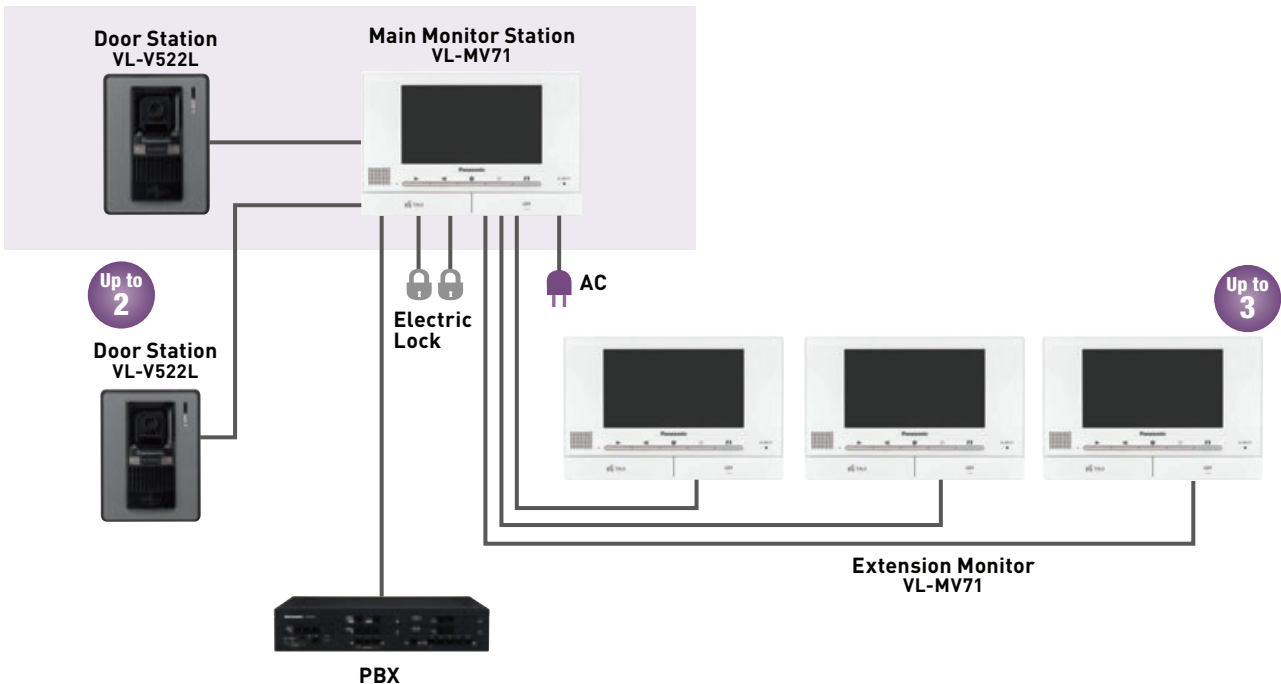
قابل للتوسعة بشكل كبير



- يمكن توصيل ٣ شاشات إضافية بالشاشة الرئيسية



Connection Overview

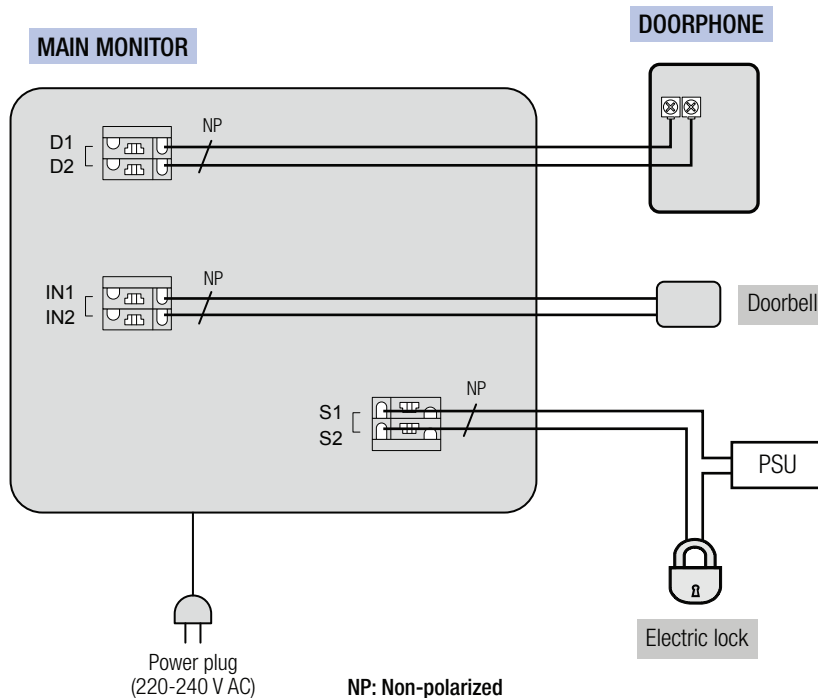




المواصفات

- شاشة ٧ بوصة عريضة ملونة
- ميزة تغير الصوت بلمسة واحده
- فتح قفل الباب الكهربائي (يحتاج لمحول ١٢ فولت)
- تسجيل الصور (٥٠ زائر لكل زائر ٤ صور)
- الرؤية الليلية

Wiring Schematic Diagram





الاتصال عن طريق البريد الإلكتروني



ترسل الشاشة صورة الزائر عبر البريد الإلكتروني حيث تتمكن معرفة من زار منزلك أينما كنت

الاتصال بالهاتف الذكي

يمكن توصيل هاتفك الذكي بالشاشة عن طريق شبكة الواي فاي لتتمكن من الرد على الزائر وفتح الباب من أي مكان داخل المنزل



الرد على الزائر وفتح قفل الباب

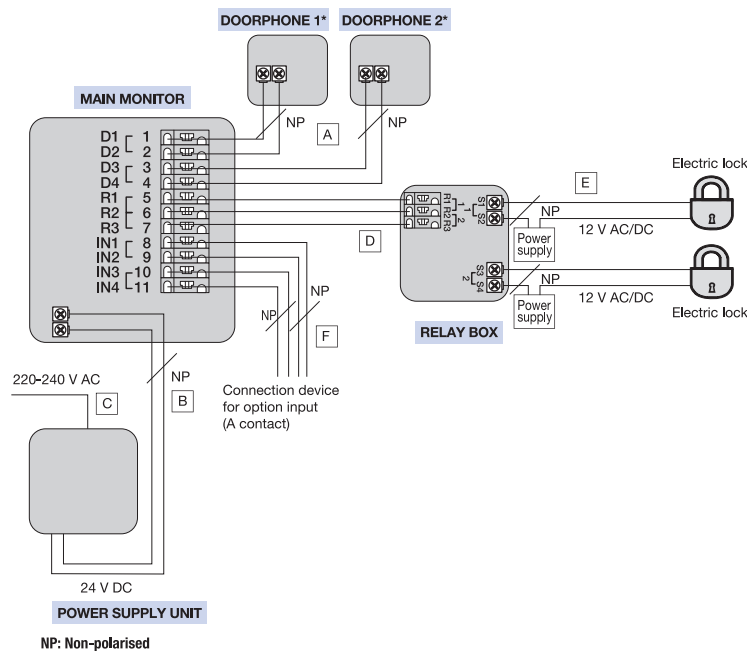


المراقبة

خصائص اخرى

- (التطبيق مجاني) iOS - Android تدعم نظام
- تسجيل الصور (٥٠ زائر لكل زائر ٤ صور)
- فك قفل الباب الكهربائي (يحتاج لمحول ١٢ فولت)
- الرؤية الليلية
- مغير الصوت

Wiring Schematic Diagram





10 Keys and LED Indicator

Highly practical, basic Lobby Station for small apartment buildings. When you enter the room number you have selected appears on the from the 10 keys, the room number 7-segment LED indicator for you to easily confirm.

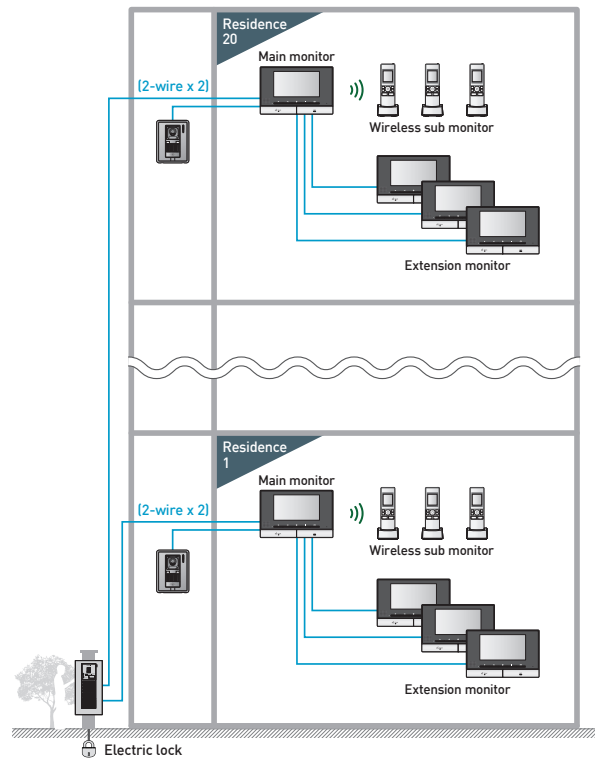


Diverse Monitor Line-up

You can choose a monitor that best fits your budget and purpose from our diverse line-up.



System Configuration Example



- Up to 20 main monitors connectable
- Electric Lock Release Support
- Door Unlocking via PIN Code
- Adjustable Camera Angle

Panasonic

VENTILATING FANS & AIR MOVING EQUIPMENTS

PROVIDING YOU A BREATH OF FRESH AIR



CEILING MOUNT TYPE VENTILATING FAN



FV-17CU8

Super Quiet Series

- HP (Half Pitch) condenser motor with thermal cutoff
- Well lubricated ball bearing for long life operation
- Resonance-noise-absorption structure for super low noise
- Sirocco fan with taper blade controls air turbulence effectively
- Reverse flow prevention shutter
- Pre-installed power cord

CEILING MOUNT TYPE VENTILATING FAN



FV-24CU8

Super Quiet Series

- HP (Half Pitch) condenser motor with thermal cutoff
- Well lubricated ball bearing for long life operation
- Resonance-noise-absorption structure for super low noise
- Sirocco fan with taper blade controls air turbulence effectively
- Reverse flow prevention shutter
- Pre-installed power cord

Specification

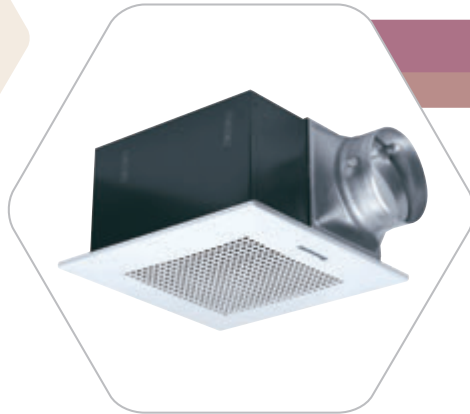
Model No.	Voltage		Air Volume		Consumption	RPM	Noise	Weight	Installation Space	Duct Size
	[V]	[Hz]	[m ³ /h]	[CFM]	[W]	[min ⁻¹]	[dB(A)]	[kg]	[mm]	[mm]
FV-17CU8	220	50	85	50	8.5	750	23.5	1.9	177 x 177	ø100
		60	85	50	10	770	26			
	230	50	85	50	9.5	775	26			
		240	60	90	53	10.5	800			

Note : RPM data is for reference only, values may vary subject to different conditions

Test Condition

- Air volume, electric characteristic and noise are specified at the static pressure of 0 Pa
- The values of noise level is A weighted average sound pressure level, the mean value are measured by our company, within +3 to -7 dB tolerance
- The values of noise level are measured at 1 m apart from the side of fan body when ducts are connected on outlet side
- The values of air volume are the mid-points of results measured by our company, within ±10% tolerance

CEILING MOUNT VENTILATING FAN



FV-27CH9, FV-32CD9

Super Quiet Series

- HP (Half Pitch) condenser motor with thermal cutoff
- Well lubricated ball bearing for long life operation
- Resonance-noise-absorption structure for super low noise
- Sirocco fan with taper blade controls air turbulence effectively
- Reverse flow prevention shutter
- Pre-installed power cord
- 2 speed selectable

FV-38CD8

Standard Series

- Condenser motor with thermal cutoff
- Well lubricated ball bearing for long life operation
- Sirocco fan with taper blade controls air turbulence effectively
- Reverse flow prevention shutter
- 2 speed selectable



Specification

Model No.	Voltage			Air Volume		Consumption	RPM	Noise	Weight	Installation Space	Duct Size	
	[V]	[Hz]		[m³/h]	[CFM]	[W]	[min ⁻¹]	[dB(A)]	[kg]	[mm]	[mm]	
FV-27CH9	220	50	Hi	330	194	28	570	34	4.4	270 x 270	Ø150	
			Lo	260	153	23	480	30				
		60	Hi	330	194	33	570	34				
			Lo	270	159	26	490	31				
	230	50	Hi	340	200	31.5		35				
			Lo	275	162	25.5		31.5				
		240	50	Hi	360	212	34	610				36.5
				Lo	290	171	27.5	520				32
FV-32CD9	220	50	Hi	430	253	42	590	36	5.2	320 x 320	Ø150	
			Lo	300	177	32	460	28				
		60	Hi	410	241	48	580	35.5				
			Lo	285	168	33	450	27.5				
	230	50	Hi	440	259	46		37.5				
			Lo	315	185	34		29				
		240	50	Hi	470	277	50	650				38.5
				Lo	330	194	38	490				30
FV-38CD8	220	50	Hi	640	377	90	645	44	9.7	385 x 385	Ø150	
			Lo	430	253	66	456	35				
		60	Hi	630	371	98	628	43.5				
			Lo	410	241	66.4	439	34.5				
	230	50	Hi	675	397	96	670	46				
			Lo	440	259	72	480	36				
		240	50	Hi	700	412	104	699				47
				Lo	470	277	78	495				37

WALL MOUNT TYPE VENTILATING FAN



FV-25AUF1

Filter Series

- Perforated aluminum filter for oil capture
- Filter with hydrophobic coating allows easy clean
- Large capacity oil cup with oil level indicator
- Condenser motor with thermal cutoff
- Well lubricated ball bearing for long life operation
- Automatic shutter
- Powerful exhaust under actual usage condition (20 Pa)

WALL MOUNT TYPE VENTILATING FAN



FV-15AST1

Automatic Shutter Series

- Condenser motor with thermal cutoff
- Lubricated sintered bush for long life operation
- High performance propeller fan adopted
- Automatic shutter with plastic cushions
- Orifice equipped with oil cup

WALL MOUNT TYPE VENTILATING FAN



FV-20AU9T, FV-25AU9T FV-30AU9T

Automatic Shutter Series

- HP (Half Pitch) condenser motor with thermal cutoff
- Well lubricated ball bearing for long life operation
- Propeller fan with advanced blade design (except FV-30AU9T)
- Automatic shutter
- Orifice equipped with oil cup

WALL MOUNT TYPE VENTILATING FAN



FV-20AL9T, FV-25AL9T FV-30AL7T

Automatic Shutter Louver Series

- HP (Half Pitch) condenser motor with thermal cutoff
- Well lubricated ball bearing for long life operation
- Propeller fan with advanced blade design (except FV-30AL7T)
- Automatic shutter
- Orifice equipped with oil cup
- Blind shutter louver enhances privacy and safety

WINDOW MOUNT TYPE VENTILATING FAN



FV-15WU4, FV-20WU4

Cord-operated Shutter Series

- HP (Half Pitch) condenser motor with thermal cutoff
- Well lubricated ball bearing for long life operation
- Propeller fan with advanced blade design
- Shutter operated by pull cord
- Metallic shutter axis enhances durability
- Able to fix on glass plate with 3mm to 7mm thickness

CEILING FAN



F-48XZ5, F-56XZ5

Regulator Control Series

- Slim panel regulator with 5-speed selection
- Thermal cutoff prevent overheating
- Safety wire provided
- Wobbling reduction mechanism prevent fan falling
- Fall prevention of blade adopted
- Permanently lubricated ball bearing equipped
- Painted steel blades
- Color : White with glossy gold ring

CEILING FAN



F-56UPG

Wireless Remote Control Series

- 3-speed selection
- Wireless remote control
- Off Timer with LED indicator (1, 3, 6 hours)
- Sleep mode
- Thermal cutoff prevent overheating
- Current fuse secure against power surge
- Safety wire provided
- Wobbling reduction mechanism prevent fan falling
- Fall prevention of blade adopted
- Permanently lubricated ball bearing equipped
- Painted steel blades
- Color : Dark gray with golden ring



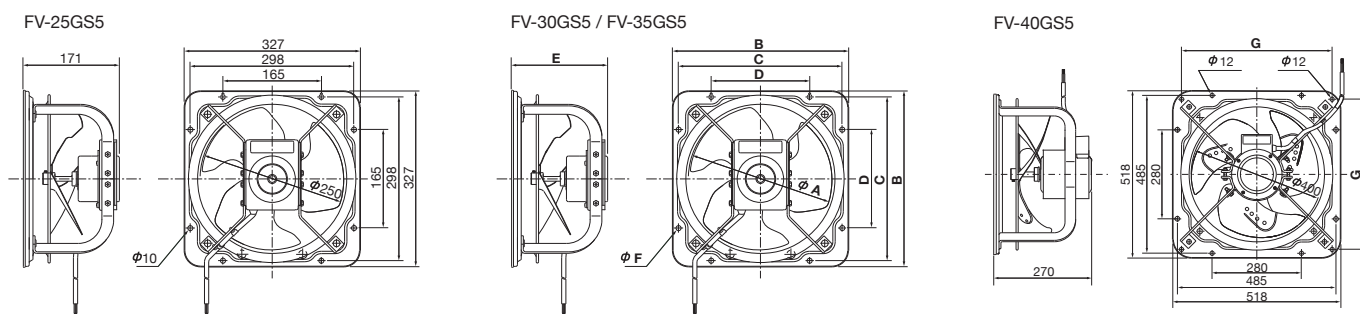
FV-25GS5, FV-30GS5 FV-35GS5, FV-40GS5

High Pressure Series

- Single phase
- Bell mouth construction with wave-shaped blade
- Durable powder coating
- High performance motor with thermal cutoff
- Reversible by adjusting wiring and blade
- Ambient temperature from -10°C to +40°C
- Possible to install horizontally or vertically
- Optional shutter available

Dimension

Unit : mm



Model	A	B	C	D	E	F	G
FV-30GS5	300	378	349	210	200	10	-
FV-35GS5	350	467	434	250	236	12	-
FV-40GS5	400	518	485	280	270	12	460

Specification

Model No.	Voltage		Air Volume		Consumption	RPM	Noise	Weight
	[V]	[Hz]	[m³/h]	[CFM]	[W]	[min⁻¹]	[dB(A)]	[kg]
FV-25GS5	220	50	1,280	753	41	1,400	44	4.4
		60	1,440	848	57	1,595	46	
	230	50	1,280	753	43	1,410	44	
		240	50	1,280	753	44	1,420	
FV-30GS5	220	50	2,150	1,265	87	1,330	49	6.1
		60	2,390	1,407	119	1,510	51	
	230	50	2,150	1,265	92	1,350	49	
		240	50	2,150	1,265	98	1,360	
FV-35GS5	220	50	2,950	1,736	113	1,430	51	10.5
		60	3,380	1,989	161	1,665	54	
	230	50	2,950	1,736	118	1,435	51	
		240	50	2,950	1,736	122	1,440	
FV-40GS5	220	50	3,900	2,295	141	1,430	54	19.0
		60	4,890	2,878	270	1,590	58	
	230	50	3,900	2,295	146	1,435	54	
		240	50	3,900	2,295	151	1,440	

Global
No.1
Brand
Cordless Phones*

KX-TGD510UEB

Nuisance Call Block
Phonebook
Key Lock with Password

- DECT Security (Enhanced encryption for more secure communication)
- Do Not Disturb Mode
- Customized Sound System (Equalizer)
- Power Back-Up Operation
- Shared Phonebook
- Key Lock

Stylish Design Cordless Phones

- Digital Cordless/Corded Phone with 1 Corded Handset and 1 Cordless Handset Dedicated Buttons
- 3 One Touch Dial Buttons (Base unit)
- Amplified Volume at One Touch (Base unit)
- One Touch Nuisance Call Block (Base unit and Handset)
- 3.4-inch Large Tilt Display on Base unit
- Power Back-Up Operation
- Digital Speakerphone on Base and Handset"

KX-TGF310UEM

Corded and Cordless Handset
Power Back-Up Operation
Call Block button on Base unit

KX-TS500

- **White/Black Buttons**
- **Electric Volume Control**
 - Even in mid-conversation, you can adjust the receiving volume of the handset to any of 6 levels.
- **Timed Flash**
 - This function, which supports Call Waiting and PBX use, ensures that a caller is not accidentally cut off while on hold.
- **Redial Memory**
 - This dials the number you most recently dialed. If you need to make a follow-up call or the line was busy the first time, just press the redial button.
- **Switch and Level**
- **Switchable Tone / Pulse Setting**
 - The KX-TS500 can be switched between tone (pushbutton) and pulse (rotary), ensuring that it will work on either type of telephone line.
- **3 Level Ringer Volume**
 - The ringer volume can be set to Off, Low, or High. Set it to Off when you don't want to be disturbed during a meeting.

KX-TS500FXW



KX-TS500FXB



KX-TS880

- **White and Black Model**
- **Caller ID Memory**
- **Hands Free Speaker Phone**
- **50-Station Phonebook**
- **20-One-Touch / 10-Speed Dialer**
- **20-Redial Memory / Auto Redial**
- **Ringer Indicator**
- **39cm Long Curl Cord**
- **2-Step Tilt Angle**
- **Programmable Flash Time Setting**
- **Programmable Tone / Pulse Setting**
- **3-Step Ringer Volume (Off, Low, High)**
- **Dial Lock**

KX-TS880FXW



KX-TS880FXB



KX-TSC11FXW

- **White, Caller ID**
- **Electric Volume Control**
- **Programmable Flash Time Settings**
- **50-Station Caller ID Memory**
- **50-Station Phonebook**
- **20-Station Redial Memory**
- **2-Line LCD with Clock**
- **Electronic Volume Control (4-Step)**



OPPLE

See Beyond



LED Downlight HR



Power: 5W/6W/9W/14W/29W/42W
Lumens Output: 400/500/700/1410/2650/3900lm
Cutout size: 80/100/120/175/210/210mm
Power Factor: 0.70/0.70/0.70/0.85/0.95/0.95
Lifetime: 30,000hrs
Key Feature: UGR19, high system efficacy

LED COB Downlight Ecomax G2



Power: 7W/10W/20W/40W
Lumens Output: 630/950/1900/4000lm
Cutout size: 70/100/140-150/200mm
Power Factor: 0.9(7W,10W,20W)/0.9(40W)
Lifetime: 30,000hrs
Key Feature: Die-cast aluminum sink, High Efficacy: 100lm/W

LED Downlight HZII



Power: 10W/15W/20W/30W/40W
Lumens Output: 900/1650/2000/3300/4000lm
Cutout size: 100/150/175/200mm
Power Factor: 0.9
Lifetime: 30,000hrs
Key Feature: Die-cast aluminum design, High Efficacy: Up to 110 lm/W, Full range of sizes 4", 6", 8" ideal for replacement projects.

LED Slim Downlight Ecomax II SM



Power: 6W/12W/18W/24W
Lumens Output: 450/1000/1500/2000lm
Cutout size: 140-150/200/200/200mm
Power Factor: 0.9
Lifetime: 30,000hrs
Key Feature: Integrated surface mounted installation

LED Downlight US Pro SM - WH



Power: 6W

Lumens Output: 420lm

Cutout size: 87mm

Power Factor: 0.5

Lifetime: 20,000hrs

Key Feature: Integrated surface mounted installation

LED Downlight US Pro SM - BK



Power: 6W/14W/18W

Lumens Output: 420/1330/1710lm

Cutout size: 87/112/142mm

Power Factor: 0.5

Lifetime: 20,000hrs

Key Feature: Integrated surface mounted installation

LED Spotlight Grid US - Single BK & WH



Power: 8W

Lumens Output: 600lm

Cutout size: 100mm x 100mm

Power Factor: 0.5

Lifetime: 20,000hrs

Key Feature: Adjustable recessed light, available in black and white body color.

LED Spotlight Grid US - Double BK & WH



Power: 2x 8W

Lumens Output: 1200lm

Cutout size: 100mm x 190mm

Power Factor: 0.5

Lifetime: 20,000hrs

Key Feature: Adjustable recessed light, available in black and white body color.

LED SPOT light RA US



Power: 6W
Lumens Output: 450lm
Cutout size: 70mm
Power Factor: 0.9
Lifetime: 20,000hrs

LED US Downlight Slim Panel



Power: 4W/6W/12W/22W
Lumens Output: 250/450/1020/1870lm
Cutout size: 70/100/150/200mm
Power Factor: 0.9
Lifetime: 20,000hrs
Key Feature: IP44 for the surface part ,Optical Material PP

LED Panel 30x120 Slim



Power: 40W
Lumens Output: 4000lm
Cutout size: 1195 x 295
Power Factor: 0.95
Lifetime: 30,000hrs
Key Feature: Hosing Material PC , IP44

LED Slim Panel Ecomax III



Power: 60W
Lumens Output: 6000lm
Cutout size: 580*1180mm
Power Factor: 0.95
Lifetime: 30,000hrs
Key Feature: Ultra slim, flicker free, high efficacy: 100lm/W, MS diffuser add materials resistant to high temperature and Anti-UV.

LED Linear-E II Office



Power: 30W

Lumens Output: 3300lm

Cutout size: 1200mm

Power Factor: 0.9

Lifetime: 30,000hrs

Key Feature: Excellent Performance: Higher Brightness, High Efficiency and High PF. Use surface mounted and recessed.

LED Slim Panel Ecomax Power III



Power: 40W

Lumens Output: 4000lm

Cutout size: 585*585/590*590/285*1185mm

Power Factor: 0.9

Lifetime: 30,000hrs

Key Feature: Slim and stylish design, only 9mm slim, high efficacy: 100lm/W

LED Utility Linear Light



Power: 16W/32W

Lumens Output: 1500/3000lm

Power Factor: 0.9

Lifetime: 15,000hrs

Key Feature: Easier solution to save more, Plug-n-Play to simplify installation and replacement

LED Highbay EcoMax II



Power: 100/150/200W

Lumens Output: 1300/19500/26000lm

Power Factor: 0.95

Lifetime: 50,000hrs

Key Feature: IP65, beam angle 60°

LED Lowbay Ecomax



Power: 200W
Lumens Output: 20000lm
Power Factor: 0.95
Lifetime: 30,000hrs
Key Feature: IP20, high power assembly accessories to make different beam angle, flexible installation

LED Waterproof Ecomax II



Power: 46W
Lumens Output: 5520lm
Length: 1260mm
Power Factor: 0.90
Lifetime: 50,000hrs
Key Feature: Efficacy up to 120lm/W, IP65, IK08
Emergency option available

LED Bulkhead Ecomax



Power: 6.5W/13W/20W/30W
Lumens Output: 650/1300/2000/3000lm
Power Factor: 0.90
Lifetime: 30,000hrs
Key Feature: IP65, IK08, high efficacy up to 100lm/W, surge protection up to 2.5KV

LED Streetlight EA Series



Power: 150W
Lumens Output: 17250lm
Power Factor: 0.95
Lifetime: 30,000hrs
Key Feature: Smooth die-cast aluminum housing, IP66 dust and water proof, wide adjustable installation, Surge protection up to 10KV

LED Floodlight EcoMax II



Power: 30W/50W/70W/100W
Lumens Output: 2500/4200/6000/9400lm
Power Factor: 0.95
Lifetime: 30,000hrs
Key Feature: IP65, IK08

LED Floodlight EQ III



Power: 30W/50W/70W/100W/150W/200W
Lumens Output: 2700/4500/6300/9000/13500/18000lm
Power Factor: 0.95
Lifetime: 30,000hrs
Key Feature: IP66, IK08, bracket accessories
maximum power to 200W

LED Floodlight PQ



Power: 10W/20W/30W/50W/70W/100W
Lumens Output: 800/1600/2400/4000/5600/8000lm
Power Factor: 0.9
Lifetime: 30,000hrs
Key Feature: IP66, IK07, motion sensor option

LED Ecomax Stick Lamp



Power: 13W
Lumens Output: 1450lm
Bulb Base: E27
Power Factor: >0.5
Lifetime: 20,000hrs
Key Feature: High efficacy: 100-113lm/W

LED Ecomax 1 Bulb



Power: 9W/12W/14W

Lumens Output: 810/1150/1400lm

Bulb Base: E27

Power Factor: 0.5

Lifetime: 20,000hrs

Key Feature: Energy saving, flicker free, IP20

LED Ecomax 1 T5 Batten



Power: 3.5W/7W/10.5W/14W

Lumens Output: 300/600/900/1200lm

Power Factor: 0.9

Lifetime: 20,000hrs

Key Feature: Plastic unibody design with integrated connector

LED Ecomax1 T8 Tube



Power: 9W/18W

Lumens Output: 900/1800lm

Power Factor: 0.9

Lifetime: 20,000hrs

Key Feature: Blue caps, high efficacy up to 100lm/W, long lifespan

LED Ecomax High Power Bulb



Power: 20W , 30W , 40W , 50W

Lumens Output: 1900,3000,4000,5000lm

Power Factor: 0.9

Lifetime: 25,000hrs

Key Feature: IP20, 100-240V, PMMA Housing White

LED Striplight Green



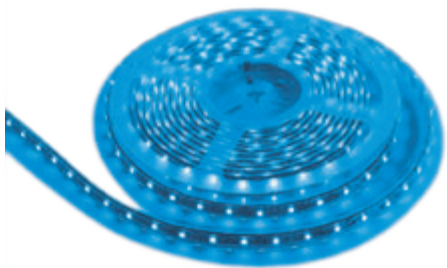
Power: 8W
Lumens Output: 550lm
Power Factor: 0.9
Lifetime: 15,000hrs
Key Feature: Roll 50 meter, Green light

LED Striplight Outdoor



Power: 8W
Lumens Output: 400lm
Power Factor: 0.9
Lifetime: 15,000hrs
Key Feature: IP65, Roll 50 meter, color 6000k, 3000k

LED Striplight Blue



Power: 8W
Lumens Output: 550lm
Power Factor: 0.9
Lifetime: 15,000hrs
Key Feature: Roll 50 meter, Blue light

LED Striplight RGB



Power: 3.5W up to 9W
IP: 20
Power Factor: 0.8
Lifetime: 20,000hrs
Key Feature: Roll 50meter, dimmable light, RGB Color by Remot control

LED Striplight WF



Power: 9W/12W
Lumens Output: 750/1000lm
Power Factor: 0.9
Lifetime: 15,000hrs
Key Feature: Roll 50 meter, 3000K, 4000K, 6500K

GU10 Spot Lamp



Power: 8W
Lumens Output: 760lm
Power Factor: 0.9
Lifetime: 20,000hrs
Key Feature: IP20, 220-240V , PC , GU10 HOLDER
BEAM ANGLE 36 D

LED Ecomax2 DC 24V Strip Bare



Power: 6W DC 24V
Lumens Output: 650lm
Power Factor: 0.9
Lifetime: 25,000hrs
Key Feature: IP20, Roll 10 meter, 3000K, 4000K
6500K

LED Ecomax2 DC 24V Strip Tube



Power: 6W DC 24V
Lumens Output: 650lm
Power Factor: 0.9
Lifetime: 25,000hrs
Key Feature: IP65, Roll 10 meter, 3000K, 4000K
6500K

Wall Lamp - Calla (Fixture)



Power: Max Power: LED 9W/9W*2 with E27

Key Feature: Metal materials with glass, minimalistic design, two styles: single, double heads

Start Motion Sensor



Max load: 40W-LED product, 800W-Incondescent

Surface Mounted

Power Factor: 0.95

Key Feature: Dual in line package switch, automatic switching based on motion and light level, active motion detector with High Flux System 5.8Ghz through plastic, glass and thin non-metal materials.

LED Outdoor Bollard



Power: 10W

Lumens Output: 480lm

Power Factor: 0.9

Lifetime: 25,000hrs

Key Feature: IP54 , 100-240V

LED Track Light U III



Power: 10W/20/30w

Lumens Output: 720/1800/2600lm

Power Factor: 0.5/0.9

Lifetime: 20,000hrs

Key Feature: IP20 , housing color: white and black

LED Magnetic Track Light



Power: 9W

Lumens Output: 820lm

Power Factor: 0.9

Lifetime: 30,000hrs

Key Feature: IP20, IK02, 24V, 4000K

LED Magnetic Track Light Dropper



Power: 9W

Lumens Output: 820lm

Power Factor: 0.9

Lifetime: 30,000hrs

Key Feature: IP20, IK02, 24V, 4000K

LED Magnetic Track Light Grid



Power: 9W

Lumens Output: 820lm

Power Factor: 0.9

Lifetime: 30,000hrs

Key Feature: IP20, IK02, 24V, 4000K

LED Magnetic Track Light Turn Grid



Power: 9W

Lumens Output: 820lm

Power Factor: 0.9

Lifetime: 30,000hrs

Key Feature: IP20, IK02, 24V, 4000K

LED Magnetic Track Light FL Sonder



Power: 27W

Lumens Output: 1230lm

Power Factor: 0.9

Lifetime: 30,000hrs

Key Feature: IP20, IK02, 24V, 4000K

LED Magnetic Track Light OP-IESVC



Power: 160W

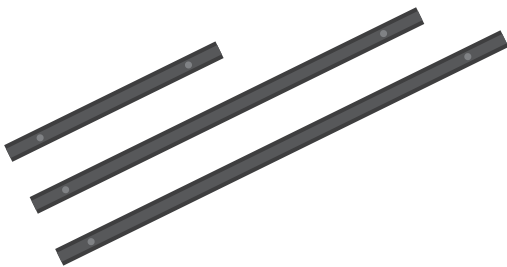
Lumens Output: 14600lm

Power Factor: 0.9

Lifetime: 30,000hrs

Key Feature: IP20, IK02, 24V

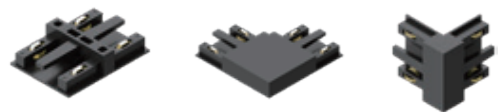
LED Magnetic Track



Length: 0.5 m/1 m/ 2 m

Key Feature: IP20, IK02, 24V

LED Magnetic Track Connector



Shape: Line, Plane, Stereo

Key Feature: IP20, IK02, 24V



LED A Bulb

- Illuminate anywhere you need with comfortable light
- Comfortable light design, no flicker
- Optimal heat management, up to 20Khrs lifetime
- 220-240V~/100-240V-.voltage is optional
- E27/B22/E14 lamp holder is optional
- CB certification & EMC
- 3000K/6500k/Red/Green/Blue is optional



LED Stick Lamp

- Optimized optical design
- Perfect for down light and slim luminaire application
- Optimal heat management, up to 20Khrs lifetime
- E27/B22 lamp holder is optional
- CE certification & EMC
- CCT:3000K/6500K is optional



LED Candle

- Ideal for use in chandeliers, easy to match fixture color
- >50% energy savings compared to conventional bulb
- Milk/Transparent body is optional
- E14 lamp holder, CE certification & EMC
- CCT:3000K/6500K is optional



LED GU10

- Easy to replace 35-75W halogen lamp
- Optimal heat management
- GU10/GU5.3 Lamp holder is optional
- Dimming is optional
- CE certification & EMC
- CCT:3000K/6500K is optional



LED COB Downlight

- COB LED, Comfortable and Efficient light
- Compact shape for shallow ceiling cavities
- Optimal heat management, Aluminum body
- High-performance nano reflector, 100lm/W
- Silver/white reflector is optional
- CCT:3000K/6500K is optional



LED Spotlight Premium

- New designed optical lens and great COB LED
- Optimal heat management, Aluminum body
- Flicker free could reduce stress
- 20°/30° Beam angle is optional
- CB certification & EMC
- CCT:3000K/6500K is optional



LED Slim Downlight

- Ultra-thin to 30mm, 2.5-6 inch is optional
- 85% lower energy consumption than CFL downlight
- Driver on board, excellent heat dissipation
- Over 20,000 hours lifespan
- CE certification & EMC
- CCT:3000K/6500K is optional



LED Surface Downlight

- Ultra-thin design with built-in LED Driver
- Better texture, finely granular surface
- Surface installation, 4-10 inch is optional
- PF>0.7/PF>0.5 is optional
- CB certification & EMC
- CCT:3000K/6500K is optional

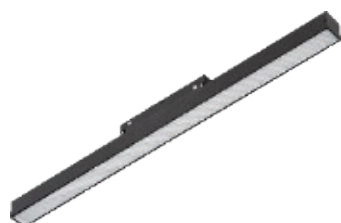
Soft Strip Driver

- for 12W



LED Striplight

- LED soft strip, 12W , 220-240V, 50/60Hz, 3000K



Linear Light

- 10W, 18W
- Magnetic
- 48V
- Black
- 3000K, 4000K



Grille Spot

- 6W, 12W, 18W
- Magnetic
- 48V
- Black, 24°
- 3000K, 4000K



Grille Spot

- 9W, 18W
- Magnetic
- 48V
- Black, 24°
- 3000K, 4000K



Track Spot Light

- 7W, 12W
- Magnetic
- 48V
- Black, 24°
- 3000K, 4000K



Spot Light

- Chandelier
- Magnetic
- 48V
- Black, 24°
- 4000K

LED Driver

- RoHs
- 100W, 50W
- 48V



Mounting Accessories



- RoHs
- Build-In Track
- 1.0m, 1.5m, 2.0m



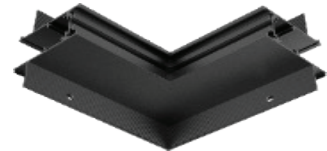
- RoHs
- Hoisting Track
- 1.0m, 1.5m, 2.0m



- RoHs
- Build-In Track
- Vertical corner



- RoHs
- Build-In Track
- Horizontal corner



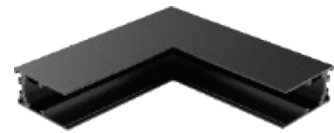
- RoHs
- Build-In Track
- Vertical Outside corner



- RoHs
- Hoisting/Surface Track
- Horizontal corner



- RoHs
- Hoisting/Surface Track
- Vertical Outside corner



- RoHs
- Hoisting/Surface Track
- Vertical corner

Connectors




- RoHs
- Magnetic
- Track connect
- MDL-MTR2.PJ-1



- RoHs
- Magnetic
- Track connect
- MDL-MTR2.PJ-2

MADE IN
ITALY



fumagalli

s i n c e 1 9 7 3



GARDEN - WALL POST



ROBY

Model No. T20.240.E27
Moulded Color: ●Black ●Grey
Diffuser PMMA: ○Opal ●Clear
Size: H=275 x W=260
Insulation Class II, IP55



GLOBE 300 MODERN

Model No. G31.240.E27
Moulded Color: ●Black ●Grey
Diffuser PMMA: ○Opal ●Clear
Size: H=380 x W=320
Insulation Class II, IP55



ECOBEPPE 400

Model No. EP5.254.D6K
Moulded Color: ●Black ●Grey
Diffuser PMMA: ○Opal ●Clear
Lamp Holder: GX53 CCT Set
Size: H=710 x W=420
Insulation Class II, IP55



GOLIA

Model No. Q23.131.E27
Moulded Color: ●Black ○White
Diffuser PMMA: ○Opal ●Clear
Size: H=450 x W=300
Insulation Class II, IP55



ANNA

Model No. E22.131.E27
Moulded Color: ●Black ○White
Diffuser PMMA: ○Opal ●Clear
Size: H=450 x W=275
Insulation Class II, IP55



SILOE

Model No. K35.132.E27
Moulded Color: ●Black ○White
Diffuser PMMA: ○Opal ●Clear
Size: H=630 x W=400
Insulation Class II, IP55



GLOBE 250 CLASSIC

Model No. G25.131.E27
Moulded Color: ●Black ○White
Diffuser PMMA: ○Opal ●Clear
Size: H=360 x W=300
Insulation Class II, IP55



MARY

Model No. Q18.131.E27
Moulded Color: ●Black ○White
Diffuser PMMA: ○Opal ●Clear
Size: H=430 x W=255
Insulation Class II, IP55



SABA

Model No. K22.131.E27
Moulded Color: ●Black ○White
Diffuser PMMA: ○Opal ●Clear
Size: H=460 x W=275
Insulation Class II, IP55



ELIA

Model No. Q43.171.E27
Moulded Color: ●Black ○White
Diffuser PMMA: ○Opal ●Clear
Size: H=910 x W=660
Insulation Class II, IP55



CEFA

Model No. U23.131.E27
Moulded Color: ●Black ○White
Diffuser PMMA: ○Opal ●Clear
Size: H=480 x W=300
Insulation Class II, IP55



SIMON

Model No. U35.132.D4K
Moulded Color: ●Black ○White
Diffuser PMMA: ○Opal ●Clear
Lamp Holder: GX53 CCT Set
Size: H=660 x W=390
Insulation Class II, IP55



LIFETIME GUARANTEE

ضمان مدى الحياة



GARDEN - POLE



MARY

Model No. Q18.110.E27
Moulded Color: ●Black ○White
Diffuser PMMA: ○Opal ●Clear
Size: H=430 x W=255
Insulation Class II, IP55



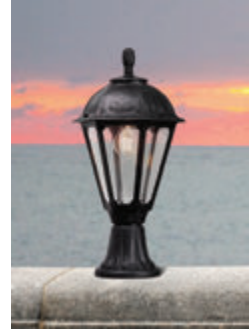
DARIO

Model No. T24.114.E27
Moulded Color: ●Black ○White
Diffuser PMMA: ○Opal ●Clear
Size: H=320 x W=240
Insulation Class II, IP55



GLOBE 250 MODERN

Model No. G26.114.E27
Moulded Color: ●Black ●Grey
Diffuser PMMA: ○Opal ●Clear
Size: H=350 x W=120
Insulation Class II, IP55



SALEM

Model No. K26.111.E27
Moulded Color: ●Black ○White
Diffuser PMMA: ○Opal ●Clear
Size: H=500 x W=315
Insulation Class II, IP55

PENDANT



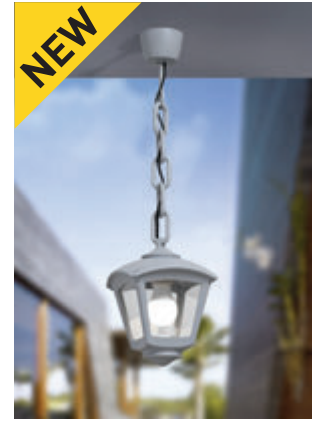
MARY

Model No. Q18.120.E27
Moulded Color: ●Black ○White
Diffuser PMMA: ○Opal ●Clear
Size: H=780 x W=180
Insulation Class II, IP55



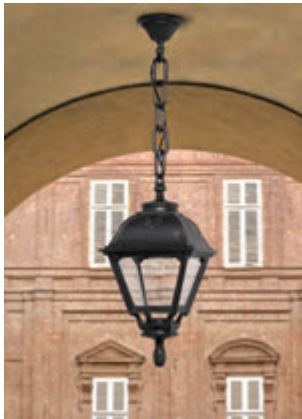
GLOBE 300 CLASSIC

Model No. G30.120.E27
Moulded Color: ●Black ○White
Diffuser PMMA: ○Opal ●Smoked
Size: H=750 x W=300
Insulation Class II, IP55



ROBY

Model No. T20.125.E27
Moulded Color: ●Black ●Grey
Diffuser PMMA: ○Opal ●Clear
Size: H=700 x W=200
Insulation Class II, IP55



CEFA

Model No. U23.120.E27
Moulded Color: ●Black ○White
Diffuser PMMA: ○Opal ●Clear
Size: H=820 x W=230
Insulation Class II, IP55



GLOBE 250 MODERN

Model No. G26.125.E27
Moulded Color: ●Black ●Grey
Diffuser PMMA: ○Opal ●Clear
Size: H=755 x W=250
Insulation Class II, IP55



ANNA

Model No. E22.120.E27
Moulded Color: ●Black ○White
Diffuser PMMA: ○Opal ●Clear
Size: H=800 x W=220
Insulation Class II, IP55



GARDEN - WALL POST



ROBY

Model No. T20.242.E27
Moulded Color: ●Black ●Grey
Diffuser PMMA: ○Opal ●Clear
Size: H=945 x W=200
Insulation Class II, IP55



GLOBE 300 MODERN

Model No. G31.242.E27
Moulded Color: ●Black ●Grey
Diffuser PMMA: ○Opal ●Clear
Size: H=1050 x W=300
Insulation Class II, IP55



GOLIA

Model No. Q23.151.E27
Moulded Color: ●Black ○White
Diffuser PMMA: ○Opal ●Clear
Size: H=1100 x W=230
Insulation Class II, IP55



MARY

Model No. Q18.151.E27
Moulded Color: ●Black ○White
Diffuser PMMA: ●Opal ○Clear
Size: H=1080 x W=180
Insulation Class II, IP55



GLOBE 300 CLASSIC

Model No. G30.162.E27
Moulded Color: ●Black ○White
Diffuser PMMA: ○Opal ●Clear
Size: H=1000 x W=300
Insulation Class II, IP55



RUT

Model No. E26.151.E27
Moulded Color: ●Black ○White
Diffuser PMMA: ○Opal ●Clear
Size: H=1150 x W=260
Insulation Class II, IP55



GARDEN - POLE



ESTER

Model No. DS1.560.D1K
Moulded Color: ●Black ○White
Diffuser PMMA: ●Clear
Lamp Holder: GX53 CCT Set
Size: H=165 x W=126
Insulation Class II, IP55



AMELIA

Model No. DR2.570.E27
Moulded Color: ●Black ○White
Diffuser PMMA: ○Clear
Size: H=165 x W=126
Insulation Class II, IP55



AMELIA - FS

Model No. DR2.571.E27
Moulded Color: ●Black ○White
Diffuser PMMA: ○Opal
Size: H=340 x W=170
Insulation Class II, IP55



ELISA

Model No. DS2.560.D1K
Moulded Color: ●Black ○White
Diffuser PMMA: ●Clear
Lamp Holder: GX53 CCT Set
Size: H=165 x W=126
Insulation Class II, IP55



GIOVA/GERMANA

Model No. 2N1.702.E27
Moulded Color: ●Black ○White
Diffuser PMMA: ○Opal
Size: H=280 x W=180
Insulation Class II, IP66



TOMMY

Model No. 2M1.000.D1K
Moulded Color: ●Black
Diffuser PMMA: ●Frosted
Lamp Holder: GX53 CCT Set
Size: H=165 x W=152
Insulation Class II, IP66

SPIKE



ESTER

Model No. DS1.561.D1K
Moulded Color: ●Black ○White
Diffuser PMMA: ●Clear
Lamp Holder: GX53 CCT Set
Size: H=175 x W=126
Insulation Class II, IP55



ELISA

Model No. DS2.561.D1K
Moulded Color: ●Black ○White
Diffuser PMMA: ●Clear
Lamp Holder: GX53 CCT Set
Size: H=175 x W=126
Insulation Class II, IP55



TOMMY

Model No. 2M1.001.D1K
Moulded Color: ●Black
Diffuser PMMA: ●Frosted
Lamp Holder: GX53 CCT Set
Size: H=340 x W=152
Insulation Class II, IP66



BOLLARDS



AMELIA 400
Model No. DR2.574.E27
Moulded Color: ●Black ○ White
Diffuser PMMA: ○Opal
Size: H=400 x W=155
Insulation Class II, IP55



ESTER 500
Model No. DS1.563.D1K
Moulded Color: ●Black ○ White
Diffuser PMMA: ●Clear
Lamp Holder: GX53 CCT Set
Size: H=480 x W=175
Insulation Class II, IP55



MINIPINELA 1L
Model No. 2N1.612.010.D2K
Moulded Color: ●Black ○ White
Diffuser PMMA: ○Opal
Lamp Holder: GX53 CCT Set
Size: H=700 x W=320
Insulation Class II, IP66



ELISA 800
Model No. DS2.564.D1K
Moulded Color: ●Black ○ White
Diffuser PMMA: ●Clear
Lamp Holder: GX53 CCT Set
Size: H=800 x W=175
Insulation Class II, IP55



ESTER 800
Model No. DS1.564.D1K
Moulded Color: ●Black ○ White
Diffuser PMMA: ●Clear
Lamp Holder: GX53 CCT Set
Size: H=800 x W=175
Insulation Class II, IP55



STEVEN
Model No. ST1.531.Z1R
Moulded Color: ●Black ○ White
Diffuser PMMA: ●Frosted
Lamp Holder: GU10 3000K
Size: H=450 x W=130
Insulation Class II, IP67



PINELA 2L
Model No. 2N1.613.020.D2K
Moulded Color: ●Black ○ White
Diffuser PMMA: ○Opal
Lamp Holder: GX53 CCT Set
Size: H=943 x W=370
Insulation Class II, IP66



PINA 2L
Model No. 4P2.613.020.D4K
Moulded Color: ●Black ○ White
Diffuser PMMA: ○Opal
Lamp Holder: GX53 CCT Set
Size: H=1000 x W=520
Insulation Class II, IP66



GABRI/LUCIA 1L
Model No. 1R3.613.X10.E27
Moulded Color: ●Black ○ White
Diffuser PMMA: ○Opal
Size: H=1000 x W=325
Insulation Class II, IP66



SAURO 800
Model No. D15.554.FC1.E27
Moulded Color: ●Black ○ White
Diffuser PMMA: ●Clear
Size: H=800 x W=150
Insulation Class II, IP55



SAURO 1100 LED
Model No. D15.555.D1K CRB
Moulded Color: ●Black ○ White
Diffuser PMMA: ●Clear ○ Opal
Lamp Holder: GX53 CCT Set
Size: H=1100 x W=150
Insulation Class II, IP55



MINIGABRI/LUCIA-GD 1L
Model No. 3R3.612.010.E27
Moulded Color: ●Black ○ White
Diffuser PMMA: ○Opal
Size: H=750 x W=300
Insulation Class II, IP66

BULKHEAD

**UMBERTA**

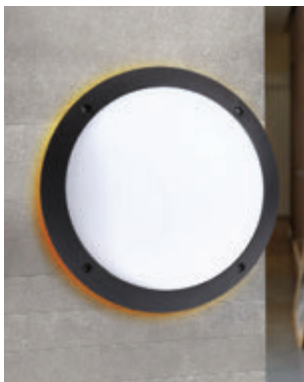
Model No. 1B3.000.E28
 Moulded Color: ●Black ○White
 Diffuser PMMA: ○Opal
 Size: H=350 x W=90
 Insulation Class II, IP66

**DANZI**

Model No. 1D3.000.E27
 Moulded Color: ●Black ○White
 Diffuser PMMA: ○Opal
 Size: H=338 x W=245
 Insulation Class II, IP66

**GELMI-GR**

Model No. 3G3.000.E27
 Moulded Color: ●Black ○White
 Diffuser PMMA: ○Opal
 Size: H=313 x W=90
 Insulation Class II, IP66

**LUCIA**

Model No. 1R3.000.E27
 Moulded Color: ●Black ○White
 Diffuser PMMA: ○Opal
 Size: H=300 x W=90
 Insulation Class II, IP66

**STUCCHI**

Model No. 1U3.000.E27
 Moulded Color: ●Black ○White
 Diffuser PMMA: ○Opal
 Size: H=310 x W=90
 Insulation Class II, IP66

**MADDI**

Model No. 1V3.000.E27
 Moulded Color: ●Black ○White
 Diffuser PMMA: ○Opal
 Size: H=330 x W=230
 Insulation Class II, IP66

DOWNLIGHT

**LIVIA 160**

Model No. 3A9.000.D1K
 Moulded Color: ●Black ○White
 Diffuser PMMA: ●Frosted
 Lamp Holder: GX53 CCT Set
 Size: H=100 x W=160
 Insulation Class II, IP44

**LIVIA 180**

Model No. 4A9.000.Q1K
 Moulded Color: ●Black ○White
 Diffuser PMMA: ●Frosted
 Size: H=220 x W=180
 Insulation Class II, IP44

**CECI 160-3L**

Model No. 3F3.000.D1K
 Moulded Color: ●Black
 Diffuser PMMA: ●Frosted
 Lamp Holder: GX53 CCT Set
 Size: H=147 x W=160
 Insulation Class II, IP67

**CECI 160**

Model No. 3F1.000.D1K
 Moulded Color: ●Black
 Diffuser PMMA: ●Frosted
 Lamp Holder: GX53 CCT Set
 Size: H=147 x W=160
 Insulation Class II, IP67

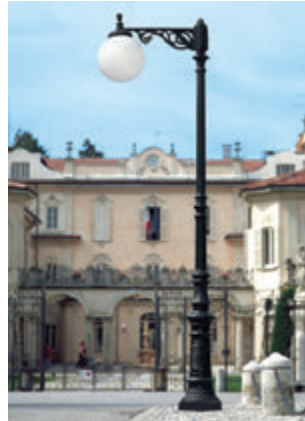
UP LIGHT

URBAN CLASSIC



NOEMI

Model No. E35.202.R20.E27
Moulded Color: ●Black ○White
Diffuser PMMA: ●Clear ○Opal
Size: H=3070 x W=860
Insulation Class II, IP55



GIONA 500

Model No. G50.225.N10.E27
Moulded Color: ●Black ○White
Diffuser PMMA: ●Clear ○Opal
Size: H=4660 x W=1185
Insulation Class II, IP55



SILOE

Model No. K35.208.M30.E27
Moulded Color: ●Black ○White
Diffuser PMMA: ●Clear ○Opal
Size: H=4120 x W=1230
Insulation Class II, IP55



TOBIA

Model No. Q33.202.E27
Moulded Color: ●Black ○White
Diffuser PMMA: ●Clear ○Opal
Size: H=2960 x W=330
Insulation Class II, IP55



GLOBE 400

Model No. G40.205.M21.E27
Moulded Color: ●Black ○White
Diffuser PMMA: ●Clear ○Opal
Size: H=3740 x W=1280
Insulation Class II, IP55



GOLIA

Model No. Q23.157.S30.E27
Moulded Color: ●Black ○White
Diffuser PMMA: ●Clear ○Opal
Size: H=2430 x W=770
Insulation Class II, IP55



SIMON

Model No. U33.232.R20.E27
Moulded Color: ●Black ○White
Diffuser PMMA: ●Clear ○Opal
Size: H=3600 x W=850
Insulation Class II, IP55



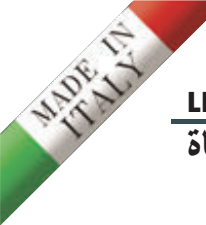
ELIA

Model No. Q43.229.N10.E27
Moulded Color: ●Black ○White
Diffuser PMMA: ●Clear ○Opal
Size: H=5160 x W=1110
Insulation Class II, IP55



NOEMI

Model No. E35.205.R20.E27
Moulded Color: ●Black ○White
Diffuser PMMA: ●Clear ○Opal
Size: H=3570 x W=860
Insulation Class II, IP55



LIFETIME GUARANTEE

ضمان مدى الحياة



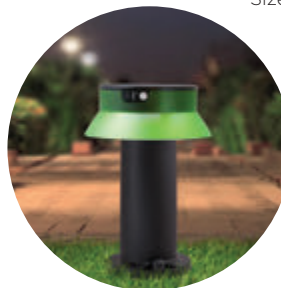
FELICE 800

Model No. FE1.575.S1K
Moulded Color:
○ Black ● White
Size: H=730 x W=220



FELICE 200

Model No. FE1.573.S1K
Moulded Color: ● Black ○ White
Size: H=180 x W=220



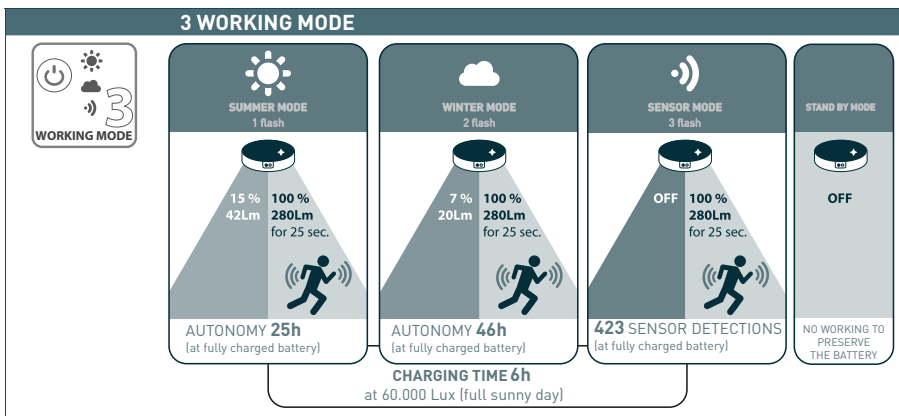
FELICE 400

Model No. FE1.574.S1K
Moulded Color: ● Black ○ White
Size: H=330 x W=220



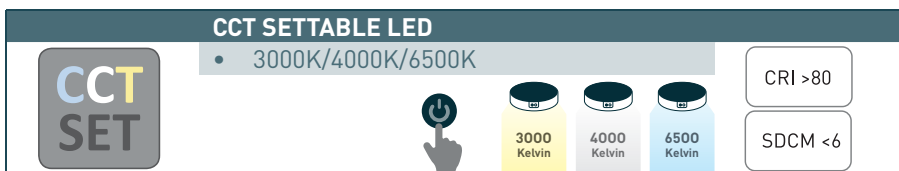
FELICE 200 SPIKE

Model No. FE1.572.S1K
Moulded Color: ● Black ○ White
Size: H=360 x W=220



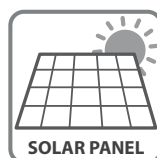
FORTUNATO

Model No. FO1.000.S1K
Moulded Color:
● Black ○ White
Size: H=40 x W=180



FIORINA

Model No. FI1.542.S1K
Moulded Color:
● Black ○ White
Size: H=560 x W=160





noma

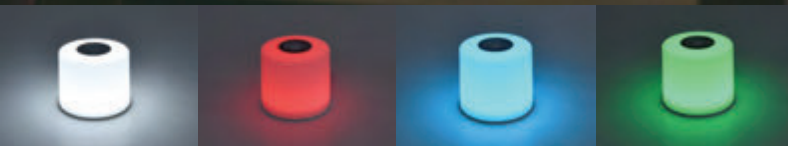


0187/NOMA additional module

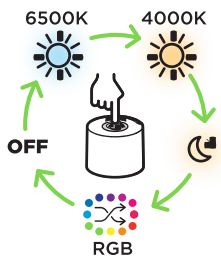
incl. LED 2.3W, 150lm
3.7V Li-ion Battery
1200mAh, Class III
IP44, CCT: from
2700K to 6500K + RGB,
LUTEC APP/Bluetooth MESH

0187/NOMA+BASE

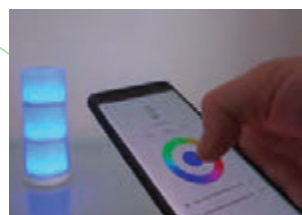
incl. 2xLED 2.3W, 2x150lm
2x3.7V Li-ion Battery
1200mAh, Class III
IP44, CCT: from
2700K to 6500K + RGB
LUTEC APP/Bluetooth MESH



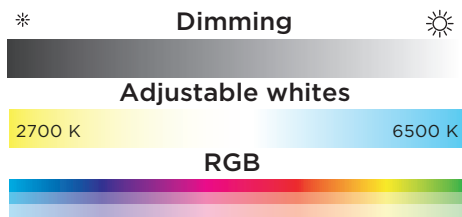
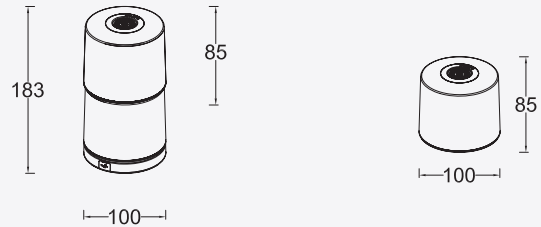
touch control



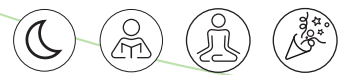
app control



charging



Activity lights



Night Reading Relaxing Party



Fire Ocean Forest Romance



PORTABLE

smart lighting technology

LUTEC connect

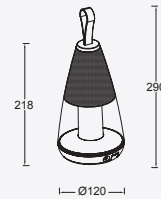


pepper



0187/PEPPER

incl. LED 4.5W, 200lm, Class III
IP54, Clear Glass, CCT: from
2700K to 6500K + RGB
LUTEC APP/Bluetooth MESH



* **Dimming** *

Adjustable whites

2700 K 6500 K

RGB

Activity lights

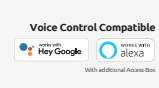
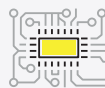


Night Reading Relaxing Party



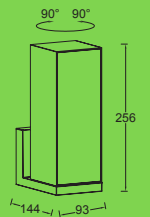
Fire Ocean Forest Romance

1	200lm(2700K)	3H
2	200lm(4500K)	3H
3	15lm(2700K)	48H
4		7H
5		OFF





cuba

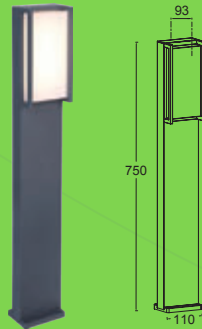


0187/SRW1

incl. LED 14W, Class I
1000lm, IP54, Opal PC
Die Cast Aluminum
CCT: 3000K

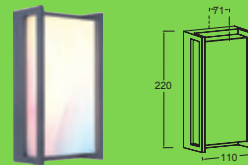


qubo



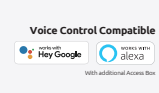
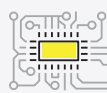
0187/SB2

incl. LED 16.2W, Class I
1200lm, IP54, Opal PC
Die Cast Aluminum
CCT: from 2700K to 6500K + RGB
LUTEC APP/ Bluetooth MESH



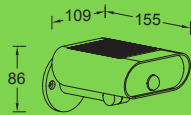
0187/SW2

incl. LED 15.2W, Class I
1200lm, IP54, Opal PC
Die Cast Aluminum
CCT: from 2700K to 6500K + RGB
LUTEC APP/Bluetooth MESH





ginbo

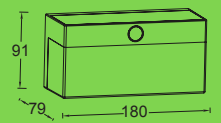


0187/SS1

incl. LED 7W, Class III
500lm, IP44, Opal PC
2200mAh 3.7V Li-ion battery
CCT: from 2700K to 6500K
LUTEC APP/Bluetooth MESH

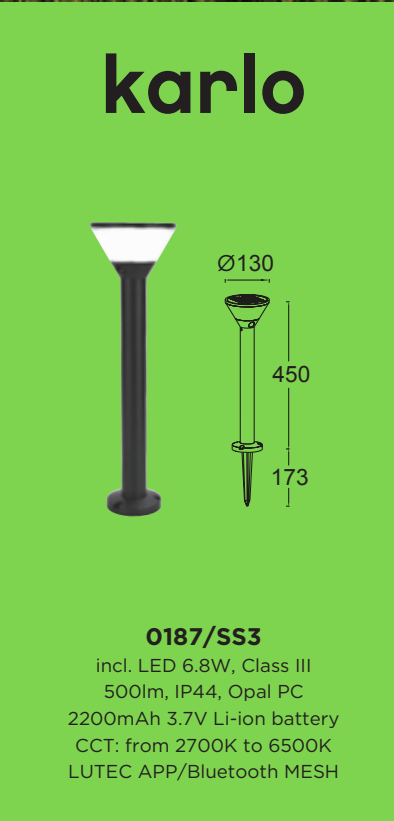


fran

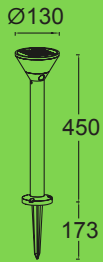


0187/SSW2

incl. LED 9.7W, Class III
800lm, IP44, Opal PC
2200mAh 3.7V Li-ion battery
CCT: from 2700K to 6500K
LUTEC APP/Bluetooth MESHT



karlo

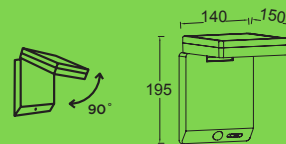


0187/SS3

incl. LED 6.8W, Class III
500lm, IP44, Opal PC
2200mAh 3.7V Li-ion battery
CCT: from 2700K to 6500K
LUTEC APP/Bluetooth MESH

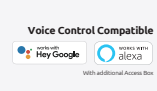
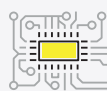


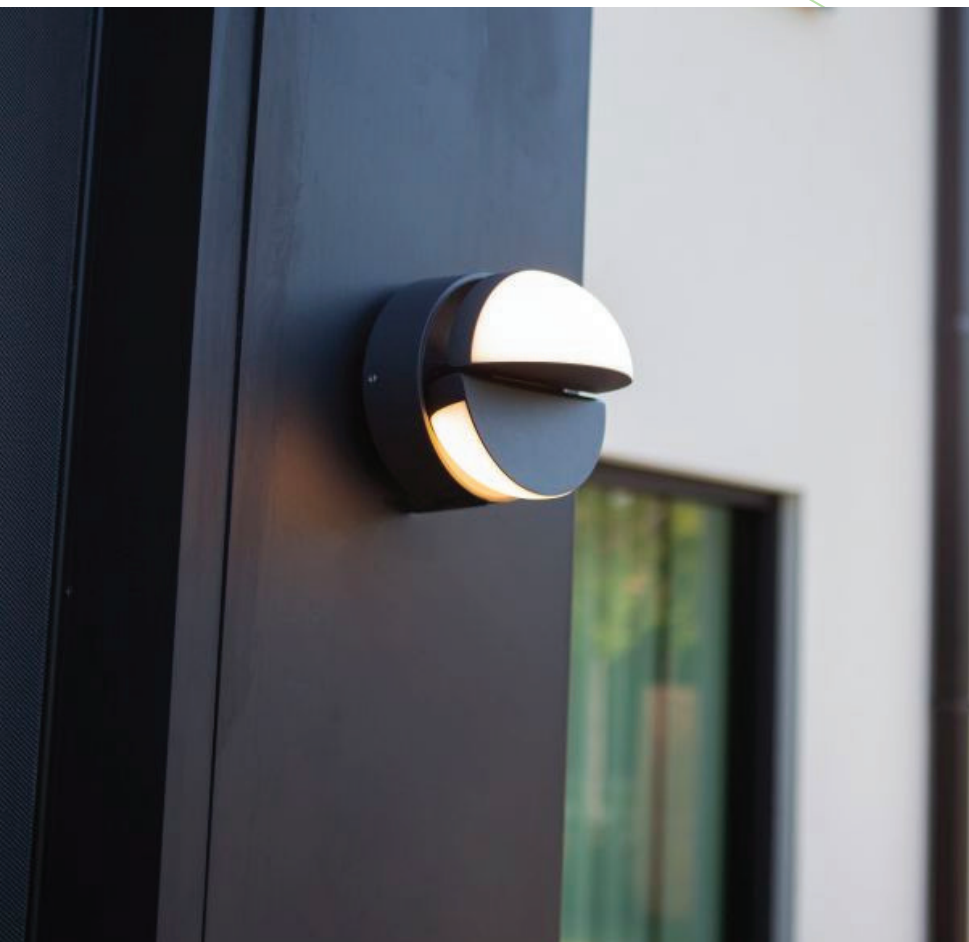
moze



0187/MOZE

incl. LED 8W, Class III
1000lm, IP44, Opal PC
1*1500mAh 3.7V Li-ion battery
CCT: 4000K





eklips

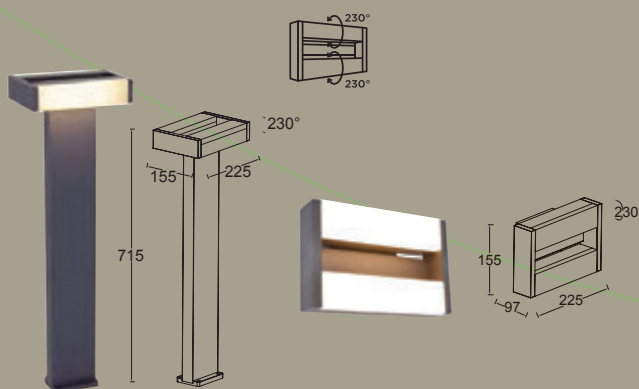


0187/5199001118

LED 13W, Class I
IP54, Opal PC
1000lm, 3000K
Aluminium+Synthetics



conroy



0187/7207001118

LED 17.8W, Class I
IP44, Opal PC
1300lm, 3000K
Die-Cast Aluminium

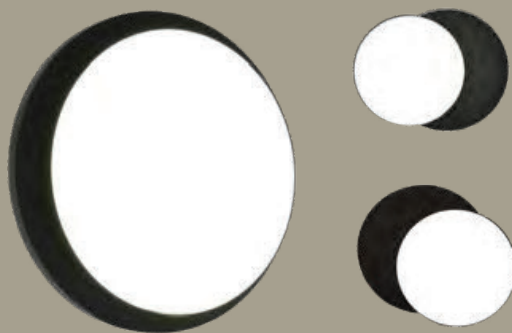
0187/5107001118

LED 17.8W, Class I
IP44, Opal PC
1300lm, 3000K
Die-Cast Aluminium



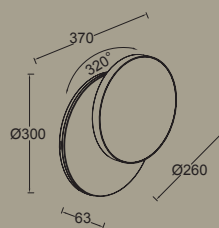


goleta



0187/5205801012

LED 24.3W, Class I
IP44, Opal PC
1700lm, 3000K
Die-Cast Aluminium

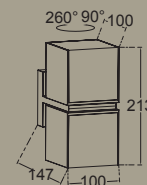


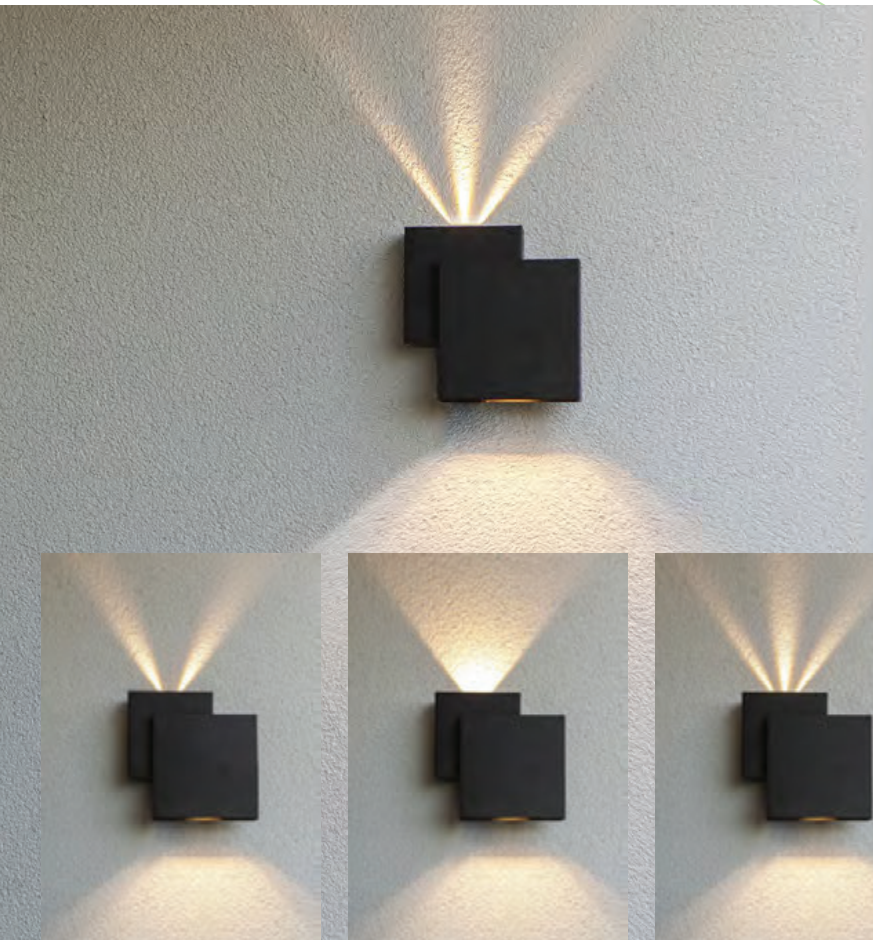
cuba



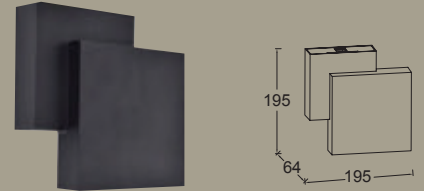
0187/1938

LED 24.4W, Class I
IP54, Opal PC
1000lm, 3000K
Die-Cast Aluminium



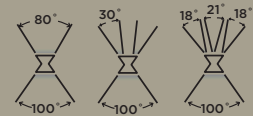


rialto

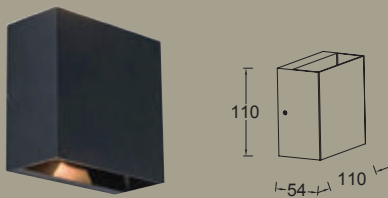


0187/5287901012

LED 14.8W, Class I
IP44, Clear Glass
850lm, 3000K
Die-Cast Aluminium

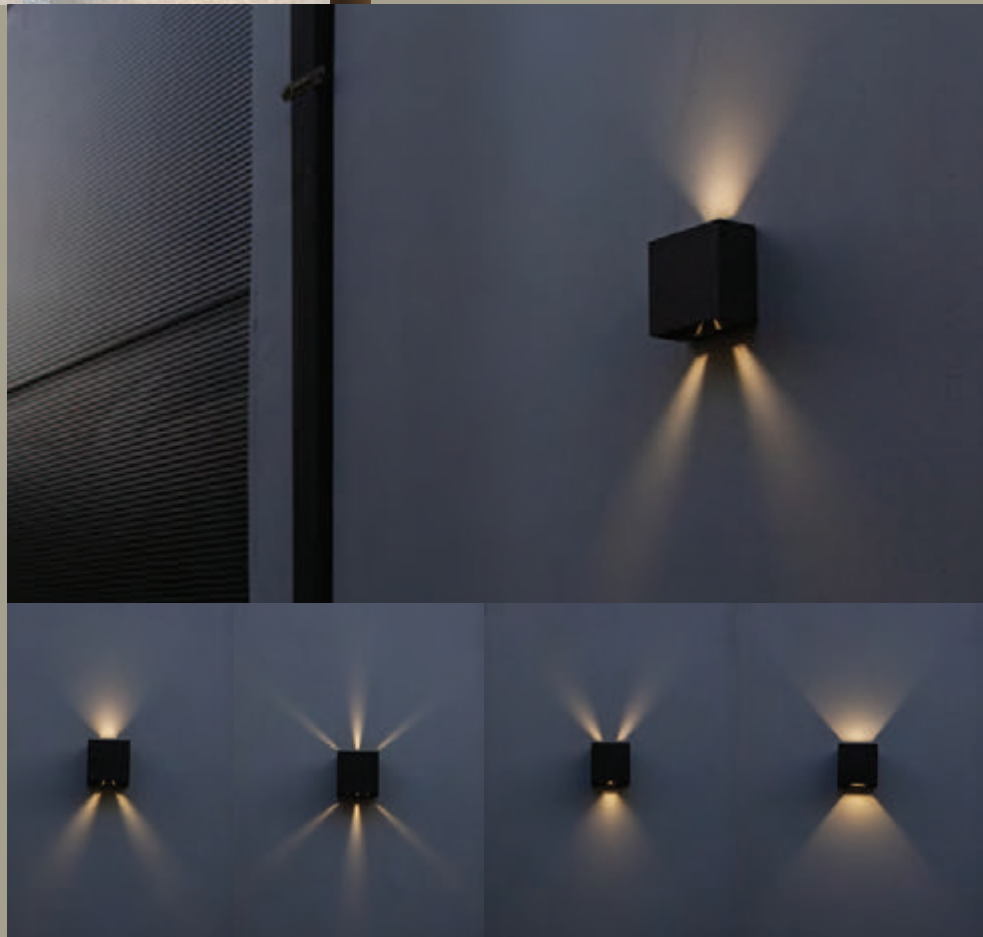
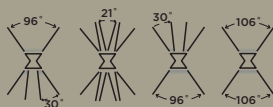


**gemini
beams**



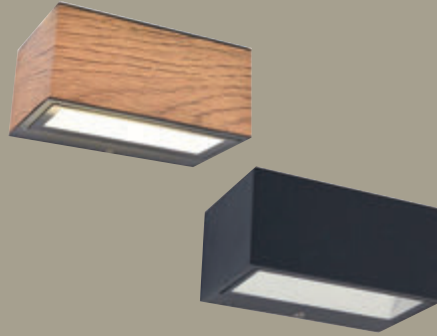
0187/5104003012

LED 10W, Class I
IP54, Clear Glass
400lm, 3000K
Die-Cast Aluminium





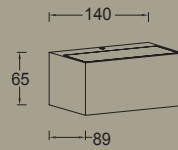
gemini



0187/5189135118 (Wood Look)

0187/5189102118 (Dark Grey)

LED 10.5W, Class I
IP54, Clear Glass
700lm, 3000K
Die-Cast Aluminium

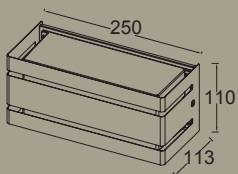


vidar



0187/5011602461

E27 Max. 40W, Class II
IP54, Clear PC
Metal

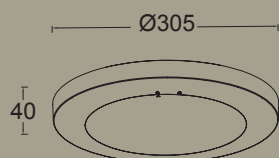


kayah

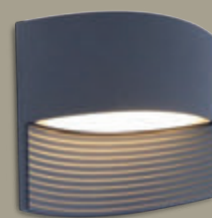


0187/6392202457

LED 16.5W, Class I
IP54, Opal PC
1250lm, 3000K
Die-Cast Aluminium

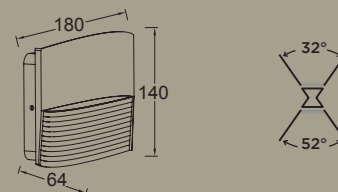


lotus



0187/1932

LED 11W, Class I
IP54, Clear PC
500lm, 3000K
Die-Cast Aluminium



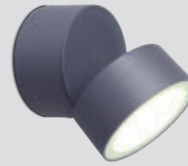
WALL LIGHT

modern range



0187/1899

incl. 28 LED 12W, 3000K, Class I
IP54, Opal PC



0187/660B-3K

incl. 14 LED 8W, 3000K, Class I
IP54, Clear Glass



0187/6166

incl. 30 LED 8W, 3000K, Class I
IP54, Opal PC



0187/ST031051

incl. 8 LED 8W, 3000K, with Driver
Class I, IP44, Opal PC



0187/134B

Die-cast Aluminium Bulkhead
Opal PC, E27, MAX 60W, CLASS I
IP54, W:249/EXT:135/H:120
GS/CE Approval



0187/XR20

incl. 10 LED, 12W, 3000K
with Driver, Class I, IP54, 300lm



0187/ST1

incl. LED 12W, 600lm
Class I, IP54, Opal PC
CCT: 3000K



0187/891M

incl. 16 LED 18.5W, 3000K
with Driver, Class I, IP54
Clear Glass, 1230lm



0187/894

incl. 12 LED, 15W, 3000K
with Driver, Class I, IP54
Opal PC, 650lm

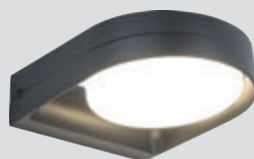


0187/1890M

incl. 12 LED 19.5W, 3000K
with Driver, Class I, IP54
Clear Glass



0187/853B
E27, 18W CFL, w/o bulb
Class I, IP44, Opal PC



0187/MW1
incl. LED 14W, 1000lm
Class I, IP54, Opal PC
CCT: 3000K



0187/2402S
incl. LED 21W, 1600lm
Class I, IP54, Opal PC
CCT: 3000K



0187/214WL
Aluminum Wall Lantern
Opal Frost PC, E27, MAX 14W PLC
Class I, IP44, W:160/EXT:99/H:160



0187/RW2
incl. LED 20W, 1500lm
Class I, IP54, Opal PC
CCT: 3000K



0187/014ST
Stainless Steel Wall Lantern, E27
Max 40W, Class I, W:116/H:376mm
GS/CE Approval, IP44, Opal PC



0187/036ST
Stainless Steel Wall Lantern
E27, Max 40W, w/o bulb
Class I, IP44, Opal PC



0187/2602
incl. 14 LED, 9W, 3000K
Class I, IP44, Clear PC



0187/2601
incl. 14 LED, 9W, 3000K, Class I
IP44, Clear PC



0187/3301
E27 60W, w/o bulb
Class I, IP54, Opal PC

WALL LIGHT

modern range

LUTEC
connect



0187/ST031081
incl. 14 LED, 3.8W, 3000K
Class I, IP44, Opal PC inside
Clear PC



0187/2401S
Heavy-duty aluminium
Wall Light, incl. 5 LED 7W, 3000K
Class I, IP44, Opal PC



0186/015B
Die-cast Aluminium Wall Lamp
Opal Glass, E27, MAX 60W, CLASS I
IP44, W:98/EXT:151/H:168



0186/014B
Die-cast Aluminium Wall Lamp
Opal Glass, E27, MAX 60W
CLASS I, IP44



0187/512ST
Stainless Steel Wall Light
incl. 8 LED 8W, 3000K, with Driver
Class I, IP44, Crystal Glass, 660lm



0187/ST5108LED
Stainless Steel Wall Light
incl. 10 LED 11.5W, 3000K
Class I, IP44, Clear PC



0187/1401L
E27, Max 100W, w/o bulb
Class I, IP44, Clear PC



0187/1402
E27, Max 60W, w/o bulb
Class I, IP44, Clear PC



0178/0121b
Die-cast Aluminium Wall Lamp
Clear PC Diffuser, E27, Max 100W
Class I, IP44, W:245/EXT:355/H:442
CE/GS Approval



0178/0031B
Die-cast Aluminium Wall Lamp Up
Clear Glass Diffuser, E27, Max 100W
Class I, W:231/EXT:268/H:430
CE/GS Approval, IP44



0187/1404L

E27, Max 100W, w/o bulb
Class I, IP44, Clear PC



0178/0011B

Die-cast Aluminium Standing Lantern
Clear Glass Diffuser, E27, Max 100W
Class I, IP44, W:231/H:486, CE/GS Approval



0187/2604

incl. 14 LED, 9W, 3000K, Class I
IP44, Clear PC



0187/7042A

incl. 5 LED 8W, 3000K, Class I, IP67
Tempered Glass, with IP68, connector
and 1.6m cable, 580lm



0187/7008-A-LED COB

incl. 1 COB LED, 35W, 3000K, with Driver
Class I, IP67, Tempered Glass
beam angel 24°, with 60cm cable



0187/7048

incl. 12 LED, 11.5W, 3000K, Class I, IP67
Tempered Glass, with IP68 connector
and 1.6m cable



0187/8091

incl. 5 LED, 8W, 3000k, class I, IP54
With 0.5 m cable, with spike, clear Glass



0187/RM1

Remote control with infrared and
Bluetooth MESH functions



0187/GW1

The gateway device



0179/055B

E27, Max 100W, w/o bulb
Class I, IP44, Opal PC
H/650 mm



0179/056B

E27, Max 100W, w/o bulb
Class I, IP44, Opal PC
H/1100 mm



0187/012ST

Stainless Steel Standing
Lantern, Opal PC, E27
Max 40W, Class I, IP44
W:131/H:450mm
GS/CE Approval



0187/013ST

Stainless Steel Standing
Lantern, Opal PC, E27
Max 40W, Class I, IP44
W:131/H:1100mm
GS/CE Approval



0187/6167

incl. 30 LED, 8W, 3000K
Class I, IP54, Opal PC



0187/ST031052-450

incl. 8 LED, 8W, 3000K
with Driver, Class I
IP44, Opal PC



0187/11402LH

E27, Max 100W, w/o bulb
Class I, IP44, Clear PC



0187/12603H4

incl. 14 LED, 9W, 3000K
Class I, IP44, Clear PC



0187/1938B

incl. LED 23W, 1000lm, Class I
IP54, Opal PC, CCT: 3000K



0187/MB1

incl. LED 14W, 1000lm
Class I, IP54, Opal PC
CCT: 3000K



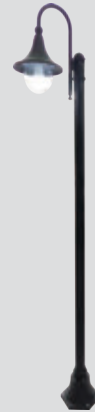
0178/0142B

Die-cast Aluminium three head
Pole Lantern, Clear PC Diffuser, 3*E27
Max 100W, Class I, IP44, H/2200 mm



0178/0141B

Die-cast Aluminium two head
Pole Lantern Clear PC Diffuser, 2*E27
Max 100W, Class I, IP44, H/2200 mm



0178/0131B

Die-cast Aluminium single head
Pole Lantern Clear PC Diffuser, E27
Max 100W, Class I, IP44, H/2200 mm



0187/11191XL-A1-3-1H

Die-cast Aluminium Single head
Pole, 150W, IP44, Class I, H:3310



0187/21191XL-A1-3-2H

Die-cast Aluminium Two head
Pole, 150W*2, IP44, Class I
H:3310mm



0187/21191XL-A1-4-2H

Die-cast Aluminium Two head
Pole, 150W*2, IP44, Class I
H:4000mm



0187/11191XL-A1-4-1H

Die-cast Aluminium Single head
Pole, 150W, IP44, Class I
H:4000mm



0187/31191XL-A1-3-3H

Die-cast Aluminium Three head
Pole, 150W, IP44, Class I
H:3310mm

Al Manara
Panel Boards Factory Co.



شركة مصنع
المنارة
للوحدات الكهربائية



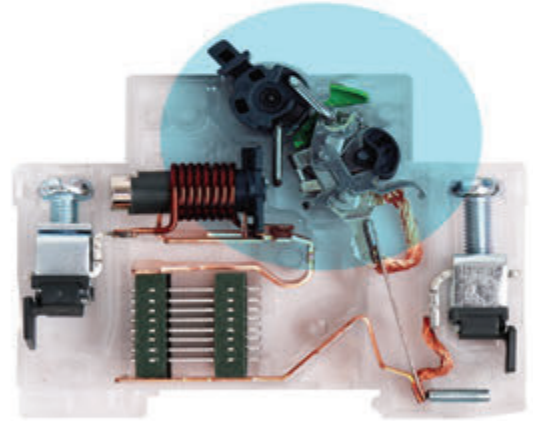
الحماية - الأمان - الراحة

Miniature Circuit Breaker from Panasonic

MCB (10KA)

قواطع من شركة باناسونيك

قواطع الدائرة الكهربائية (10KA) MCB

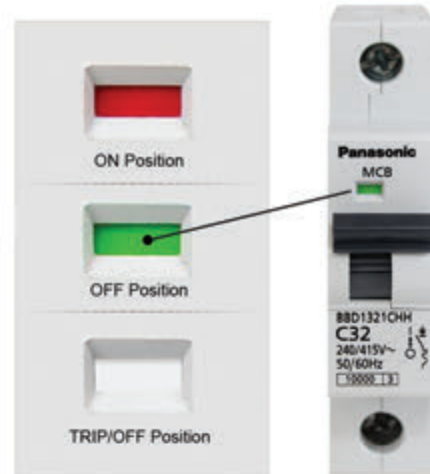


Three Level Indicator

PANASONIC MCB is having Three Level Indication to identify clear ON, OFF and Trip Position, the trip position helps user to identify fault circuit

● من مميزات قاطع باناسونيك أنه يوجد به ثلاث مستويات (مؤشر) لتحديد حالة القاطع أثناء التشغيل

- في حالة التوصيل يظهر المؤشر باللون الأحمر (شكل رقم ١)
- في حالة الفصل اليدوي يظهر المؤشر باللون الأحمر (شكل رقم ٢)
- في حالة الفصل المفاجئ بسبب زيادة الحمل أو بتلامس احد الفارات يظهر المؤشر باللون الأبيض (شكل رقم ٣)



Technical Data

الخصائص الفنية :

Short-circuit Capacity	(10KA)	سعة دائرة القصر
Tripping Characteristics	B,C and D	خصائص الاغلاق
Poles	1P, 1+N, 2P, 3P, 3+N, 4P	الأقطاب
Rated Current	6, 10, 16, 20, 25, 32, 40, 50, 63	قدرات القواطع
Rated Voltage	240/415 V	معدل الجهد الكهربائي
Frequency	50/60 Hz	التردد
Ambient Temperature	10°C To 60°C	درجة حرارة التشغيل
Terminal Connection	25 SQ.mm	أحجام الاسلاك
Electrical Endurance	8'000	عدد مرات التشغيل
Mechanical Endurance	2000v for 1 min	ميكانيكية التحمل
Mounting	35mm symmetrical DIN rail (EN 50022-DIN 46277)	طريقة التركيب
Standards	EN 60898, KEMA	العايير والقياسات

القواطع الرئيسية

Moulded Case Circuit Breakers(MCCB)

Fixed Thermal Range

Moulded Case Circuit Breakers
From 60 A To 250 A (Fixed Type)

Frame size (A)	مقاس القاطع	100 AF	250 AF
Type	النوع		
Number of poles	عدد الأقطاب	3	3
Ratings	المعدلات		
Rated current, A	معدلات التيارات بالأمبير	63	150
Calibrated at 50°C	معايرة درجة الحرارة 50 درجة	100	200

Rated insulation voltage [U _i] V AC	معدل عزل الجهد بالفولت	690	800
Rated impulse withstand voltage [U _{imp}] kV	معدل نبضات الجهد بالكيلوفولت	6	8

Rated breaking capacity, KA	تريجة تحمل تيار قصوي		
IEC60947-2	AC	690V	—
I _{cu} /I _{cs} (sym)		525V	7.5/3.8
		440V	10/5
		415V	10/5
		380V	16/8
		240V	25/13
	DC	250V	7.5/3.8
		125V	15/7.5

External dimensions, mm	أبعاد الأبعاد الخارجية		
		a	75
		b	130
		c	68
		d	87

Weight (⊙ marked standard type) kg 0.74 1.5

Connections and Mountings	التوصيلات و الحوامل		
Front-connected (FC)	التوصيل من الأمام	⊙	⊙
Terminal screws	البراغي		
With straight extension bars	مع قضبان التمديد المستقيمة للتوصيل	—	○
With spread extension bars	مع قضبان التمديد الممتدة للتوصيل		○
Cable clamps	رؤوس الكابلات	○	○
Rear-connected (RC)	مزدودة براغي كبيرة	○	○
Bolt studs	مزدودة بتضيق نحاسي للتوصيل		
Flat bar studs	التوصيل من الخلف		

Standard specifications	المواصفات القياسية		
Overcurrent trip mechanism	آلية الفصل عند التيار الزائد	Thermal-magnetic⊙	Thermal-magnetic
Trip button (color)	لون زر الفتح الكهر باني	Yes (Red)	Yes (Red)
Handle position indication (ON: Red, OFF: Green)	توضيح وضع (التشغيل لمرق لحد)	Yes	Yes
Suitability for isolation	مدى صلاحية العزل	Non	Yes
CE marking	مسطرة طبقا للمواصفات الأوروبية	Yes	Yes

Operation	التشغيل		
Endurance	قدرة التحمل	5,000	5,000
Electrical	الكهربائية	10,000	10,000
Mechanical	والميكانيكية		

القواطع الثابتة

قواطع الدائرة الكهربائية الرئيسية (MCCB)
من ٦٠ أمبير الى ٢٥٠ أمبير (ثابت)

BBC3100YH1



BBC3150YH1



BBC3250YH1



لوحات التوزيع الفرعية مع قواطع باناسونيك (حساس)

**Load Center with Panasonic Breaker
Range (Isolator from 63A to 100A) Main**



Protection - Safety - Comfort

الحماية - الأمان - الراحة



DIMENSIONS:

3 PHASE LOAD CENTRE WITH ISOLATOR AND MCB MAIN

WAYS	H	h	W	w	D
12	505	465	415	375	105
18	570	530	415	375	105
24	570	530	415	375	105
30	645	605	415	375	105
36	730	690	415	375	105
42	730	690	415	375	105

Technical characteristics

Item	Description
Standard	IEC 61439-3
Bus Bar Specs	Tin plate copper bus bar to prevent corrosion.
Enclosure Material	GI Steel with polyester coating, provides high corrosion resistance.
Steel Thickness	Start from 1mm.
Encloure color	Polyester Powder coated in RAL- 1013 Beige color.
Degree of protection	IP 40
Rated insulation Voltage	800V AC

لوحات التوزيع الفرعية مع قواطع باناسونيك (حساس)

**Load Center with Panasonic Breaker
Range (MCCB from 63A to 100A) Main**



Protection - Safety - Comfort

الحماية - الأمان - الراحة



DIMENSIONS:

3 PHASE LOAD CENTRE WITH 63-100AT MAIN

WAYS	H	h	W	w	D
12	570	530	415	375	105
18	645	605	415	375	105
24	645	605	415	375	105
30	730	690	415	375	105
36	810	770	415	375	105
42	810	770	415	375	105
48	890	850	415	375	105

Technical characteristics

Item	Description
Standard	IEC 61439-3
Bus Bar Specs	Tin plate copper bus bar to prevent corrosion.
Enclosure Material	GI Steel with polyester coating, provides high corrosion resistance.
Steel Thickness	Start from 1mm.
Enclosure color	Polyester Powder coated in RAL- 1013 Beige color.
Degree of protection	IP 40
Rated insulation Voltage	800V AC

لوحات التوزيع الفرعية مع قواطع باناسونيك (حساس)
Load Center with Panasonic Breaker
Range (MCCB from 150A to 250A) Main



Protection - Safety - Comfort
 الحماية - الأمان - الراحة

DIMENSIONS:

3 PHASE LOAD CENTRE WITH 150-250AT MAIN

WAYS	H	h	W	w	D
12	645	605	415	375	105
18	730	690	415	375	105
24	730	690	415	375	105
30	810	770	415	375	105
36	890	850	415	375	105
42	890	850	415	375	105
48	940	900	415	375	105

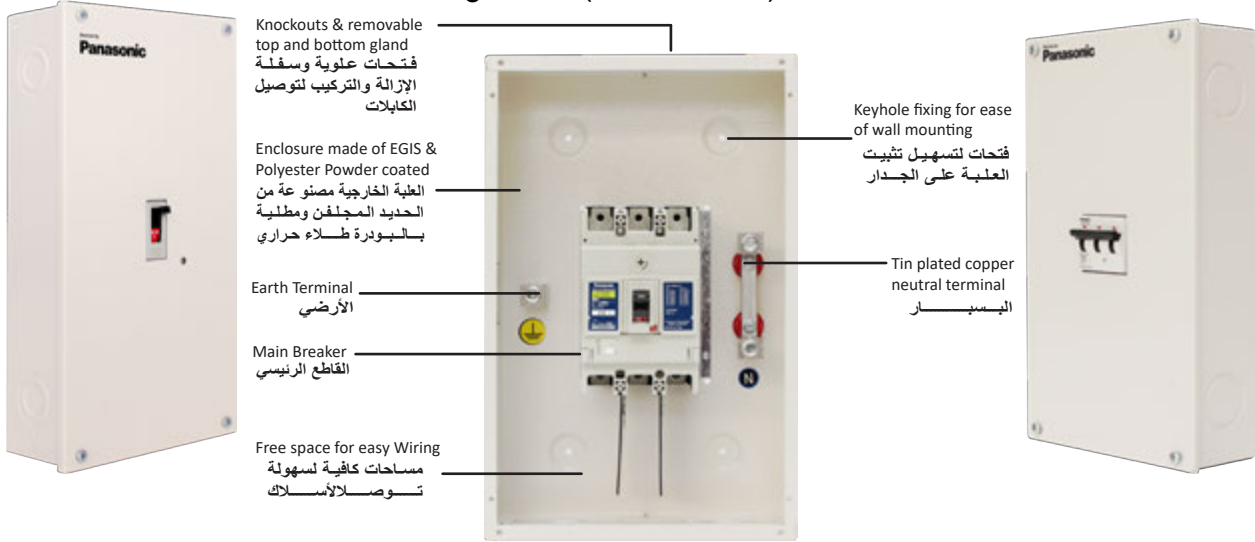
Technical characteristics

Item	Description
Standard	IEC 61439-3
Bus Bar Specs	Tin plate copper bus bar to prevent corrosion.
Enclosure Material	GI Steel with polyester coating, provides high corrosion resistance.
Steel Thickness	Start from 1 mm.
Enclosure color	Polyester Powder coated in RAL-1013 Beige color.
Degree of protection	IP 40
Rated insulation Voltage	800V AC

CIRCUIT BREAKER ENCLOSURES

قواطع الدائرة الكهربائية بالعلبة

Range from (63A to 250A)



Technical Information

المواصفات الفنية

Item	Description
Standard	IEC 61439-3
Bus Bar Specs	Tin plate copper bus bar to prevent corrosion.
Rated Voltage	230V/240~, 400V/415~
Degree of protection	IP 40
Enclosure Material	GI Steel with polyster coating, provides high corrosion resistance.
Steel Thickness	Start from 1 mm.
Encloure color	Polyester Powder coated in RAL 1013 Beige color
Paint thickness	From 60 - 80 Microns
Main Breaker	MCB and MCCB from 63A to 250A
Rated Insulation Voltage	800V AC
Ambient Temperature	50° C
Frequency	50/60Hz

OUTDOOR CIRCUIT BREAKER ENCLOSURES قاطع مع العلبة مطري

COMES IN IP65 ENCLOSURE

POLYESTER POWDER COATING FINISH WITH RAL 7035 SMALL TEX GREY COLOR

DOOR IS PROVIDED WITH THE EARTH CABLE

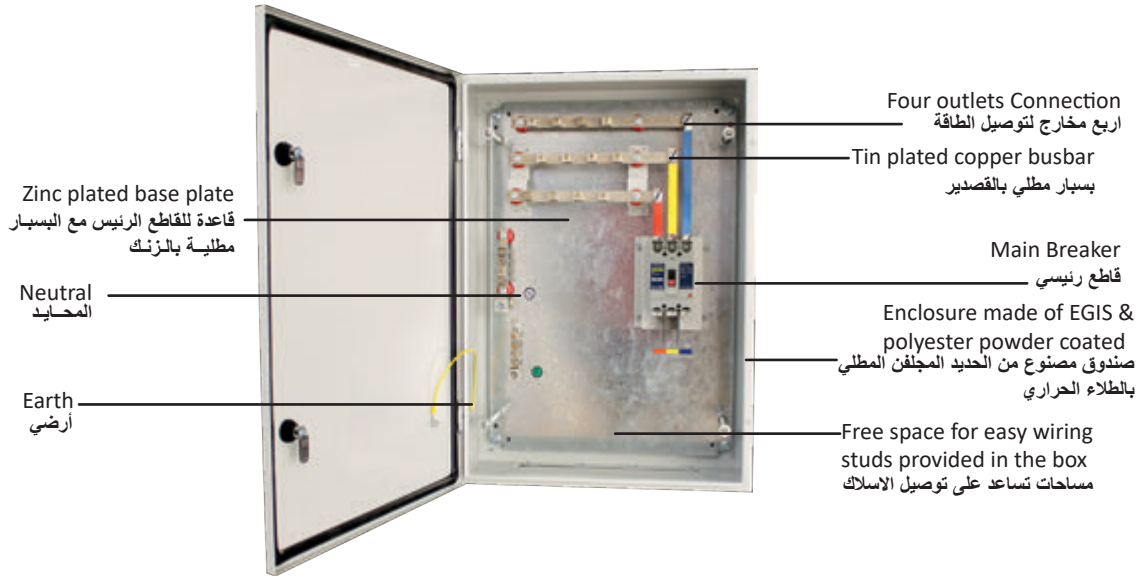
AVAILABLE FROM 63A TO 250A

RECTANGULAR LUGS ARE PROVIDED FOR EASY CABLING

SAFETY COVER TO AVOID ACCIDENTAL CONTACT



BUSBAR CHAMBER صندوق الخدمة متعدد المخارج Range from (63A to 250A)



General Information

Service boxes made from electro galvanized steel sheet with polyester coating.

Polyester powder coating RAL- 7035

Small Tex Grey Color

Provided with neutrals and earth terminal (made by brass)

Provided with safety cover to avoid accidental contact

Bus bar system made from pure Copper 99.9%, with tin plated

معلومات عامة

صندوق مصنوع من الحديد المجلفن المطلي بالطلاء الحراري

درجة لون الطلاء (رمادي RAL-7035)

مزود بالأرضي والمحايد (مصنوع من البراس)

مزود بغطاء داخلي للأمان.

البسبار مصنوع من النحاس بنسبة 99.9% المطلي بالقصدير 1.5 امبير في كل ملم

Technical Information

المواصفات الفنية

Item	Description
Rated Voltage	230V/240~, 400V/415~
Rated Insulation Voltage	800V AC
Frequency	50/60Hz
Ambient Temperature	50° C
Standard	IEC 61439 - 3
Degree of protection	IP 65





VERTICAL BUSBAR TYPE:

SINGLE INCOMER/ DUAL INCOMER	3P ISOLATOR/4P RCCB/ 3P ISOLATOR+4P RCCB INCOMER			250AF MCCB INCOMER			
	NO OF WAYS	w	D	h	w	D	h
	12	400	117	440	400	140	660
	18	400	117	545	400	140	660
	24	400	117	545	400	140	710
	30	400	117	660	400	140	760
	36	400	117	660	400	140	830
	42	400	117	710	400	140	950
	48	400	117	760	400	140	950
	54	400	117	830	400	140	950

FLUSH SURFACE TOTAL WIDTH AND HEIGHT WITH COVER

25+w=W 25+h=H
17+w=W 17+h=H

SPLIT BUSBAR TYPE:

No OF SPLIT WAYS	3P ISOLATOR+4 RCCB(2 INCOMER)		
	w	D	h
6+6	400	117	545
6+12	400	117	545
12+12	400	117	660
12+18	400	117	660
12+24	400	117	710
18+18	400	117	710
12+30	400	117	760
18+24	400	117	760
12+36	400	117	830
18+30	400	117	830
18+36	400	117	830



Hotel Room Load Center لوحات الفنادق الفرعية



AVAILABLE NOW!

SAVE ENERGY



CARD SWITCH



Technical characteristics

Item	Description
Standard	IEC 61439-3
Bus Bar Specs	Tin plate copper bus bar to prevent corrosion.
Enclosure Material	GI Steel with polyester coating, provides high corrosion resistance.
Steel Thickness	Start from 1. mm.
Enclosure color	Polyester Powder coated in RAL- 7035+7031
Degree of protection	IP 40

لوحات خاصة للمشاريع



الحماية الأمان الراحة
Protection Safety Comfort

Technical Specifications

Application
Residential, Commercial and Industrial Building
General Specifications
Standard: SASO GSO-BS4662
General Features
Ribbed Finish Ensures Strong Structure
Material Hot-Dipped Galvanized Steel Sheet (Corrosion Resistant)
Thickness
0.9 mm
Dimensions
W: 72 mm, L: 72 mm, D: 35 mm
W: 132 mm, L: 72 mm, D: 35 mm
W: 72 mm, L: 72 mm, D: 47 mm
W: 132 mm, L: 72 mm, D: 47 mm



Available Varieties

Dimensions: (W: 72 mm, L: 72 mm, D: 35 mm)

Model No.	Description	Accessory
DS707	One Modules without Earth	w/o Earth
DS707E	One Modules with Earth	with Earth
DS7072	Two Modules without Earth	w/o Earth
DS7072E	Two Modules with Earth	
DS7073	Three Modules without Earth	w/o Earth
DS7073E	Three Modules with Earth	
DS7074	Four Modules without Earth	w/o Earth
DS7074E	Four Modules without Earth	

Dimensions: (W: 132 mm, L: 72 mm, D: 35 mm)

Model No.	Description	Accessory
DS714	7 x 14 without Earth	w/o Earth
DS714E	7 x 14 with Earth	with Earth

Dimensions: (W: 72 mm, L: 72 mm, D: 35 mm)

Model No.	Description	Accessory
DS707D	One Modules without Earth (DEEP)	w/o Earth
DS707DE	One Modules with Earth (DEEP)	with Earth
DS707DEA	One Modules without Earth + Adjustable Lug (DEEP)	with Earth + Adjustable Lug
DS707D2	Two Modules without Earth (DEEP)	w/o Earth
DS707D2E	Two Modules with Earth (DEEP)	with Earth
DS707D2EA	Two Modules without Earth + Adjustable Lug (DEEP)	with Earth + Adjustable Lug
DS707D3	Three Modules without Earth (DEEP)	w/o Earth
DS707D3E	Three Modules with Earth (DEEP)	with Earth
DS707D3EA	Three Modules without Earth + Adjustable Lug (DEEP)	with Earth + Adjustable Lug
DS707D4	Four Modules without Earth (DEEP)	w/o Earth
DS707D4E	Four Modules with Earth (DEEP)	with Earth
DS707D4EA	Four Modules without Earth + Adjustable Lug (DEEP)	with Earth + Adjustable Lug

Dimensions: (W: 132 mm, L: 72 mm, D: 47 mm)

Model No.	Description	Accessory
DS714D	7 x 14 without Earth (DEEP)	w/o Earth
DS714DE	7 x 14 with Earth (DEEP)	with Earth
DS714DEA	7 x 14 without Earth + Adjustable Lug (DEEP)	with Earth + Adjustable Lug

Technical Specifications

Application
For the protection of electrical wiring.
Features
Made of hot-dip galvanized steel strip with extra-smooth surface and highly adherent zin coating.
ZINC surfaces protected inside and outside b film of resin-based overcoating.
Easier to cut, easier to bend, easier to pull.
Dimensionall accurate. Uniform quality all around.
UL Certificate Number: E502446
Made in Vietnam

ANSI C80.3

PREZING ELECTRICAL METALLIC TUBING (EMT)

- Made to ANSI Specification C 80.3
- Supplied in Plain Ends and without Coupling

Model No.	Nominal size			Outside Diameter		Nominal Wall Thickness		Length		Minimum Weight per 100 feet		Calculated Weight			Number of Lengths in Standard Packing	
	in.	in.	mm	in.	mm	ft	mm	lb	kg	lb/ft	kg/ft	kg/m	per Bundle	per Lift		
MED012	½	0.706	17.93	0.042	1.067	10	3,048	28.5	12.93	0.298	0.135	0.443	15	300		
MED034	¾	0.922	23.42	0.049	1.245	10	3,048	43.5	19.73	0.457	0.207	0.680	10	200		
MED100	1	1.163	29.54	0.057	1.448	10	3,048	64	29.03	0.673	0.305	1.00	7	140		
MED114	1¼	1.510	38.35	0.065	1.651	10	3,048	95	43.09	1.00	0.455	1.49	5	100		
MED112	1½	1.740	44.20	0.065	1.651	10	3,048	110	49.90	1.16	0.527	1.73	3	60		
MED200	2	2.197	55.80	0.065	1.651	10	3,048	140	63.50	1.48	0.671	2.20	2	40		



CONDUIT FITTINGS (EMT)

Available Varieties

EMT Set Screw Connectors, Zinc Die Cast, Non-Insulated, To Terminate EMT Pipe to Box

Size (Inch)	Model No.	Qty/Carton Box
1/2"	MSSCN-050	500 pieces
3/4"	MSSCN-075	500 pieces
1"	MSSCN-100	250 pieces



EMT Set Screw Couplers, Zinc Die Cast, To Couple two ends of EMT Pipes

Size (Inch)	Model No.	Qty/Carton Box
1/2"	MSSCP-050	500 pieces
3/4"	MSSCP-075	500 pieces
1"	MSSCP-100	250 pieces



EMT One Hole Strap, Electro-Galvanized

Size (Inch)	Model No.	Thickness (mm)	Qty/Carton Box
1/2"	MOSP-050	1.50	1000 pieces
3/4"	MOSP-075	1.50	1000 pieces
1"	MOSP-100	1.80	500 pieces



EMT Two Hole Strap, Electro-Galvanized

Size (Inch)	Model No.	Thickness (mm)	Qty/Carton Box
1/2"	MTSP-050	0.80	1000 pieces
3/4"	MTSP-075	0.80	1000 pieces
1"	MTSP-100	0.80	500 pieces



Straight Squeeze Connect for Flexible Conduit Zinc Die Cast

Size (Inch)	Model No.	Qty/Carton Box
1/2"	DSSC-050	500 pieces
3/4"	DSSC-075	500 pieces
1"	DSSC-100	250 pieces



Made in China

* Remarks: UL Certification under vendor name.



Technical Specifications

Application
For the protection of electrical wiring.
Features (Conduit Pipe)
Made of pre-galvanized steel strip.
Easier to cut, easier to bend, easier to pull.
Features (Flexible Conduit)
Made of pre-galvanized steel strip.
Easier to cut for any needs.

Available Varieties

EMT Equivalent Conduit

Model No.	Size (Inch)	Outside Diameter (mm)	Nominal Wall Thickness (mm)	Length (mm)	Pcs/Bundle
MEMT-050P	1/2"	17.93	1.07	2900	20
MEMT-050P	3/4"	23.42	1.24	2900	10
MEMT-050P	1"	29.54	1.45	2900	10

Flexible Conduit

Model No.	Size (Inch)	Outside Diameter (mm)	Nominal Wall Thickness (mm)	Length (mm)
MGFC-050	1/2"	21.50	19.00	30m/Roll
MGFC-075	3/4"	26.00	23.00	30m/Roll
MGFC-100	1"	31.00	28.00	30m/Roll



Fig.: With Straight Squeeze Connector



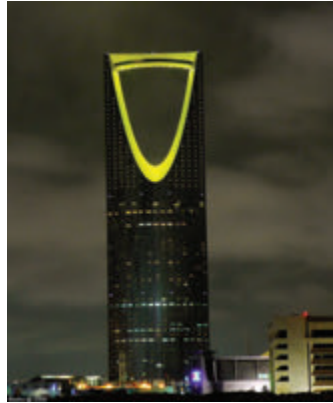
MADE IN CHINA



PROJECTS



HERFY TOWER



KINGDOM TOWER



HUMAN RIGHTS TOWER



AL FARDAN TOWER



ELEGANCE TOWER



OTHAIM MALL



MARRIOTT HOTEL



FOUR SEASONS HOTEL



INTERCONTINENTAL HOTEL



NOVOTEL HOTEL



AL HAMRA HOTEL



ANJUM HOTEL

PROJECTS



SAAB BANK



SAUDI INVESTMENT BANK



ALAWAL BANK



SAMBA BANK



AL RAJHI BANK



ANB BANK



HERFY FOODS FACTORY



PUBLIC INVESTMENT FUND



NATIONAL WATER COMPANY



ALI BIN ALI HOSPITAL



KING KHALID INTERNATIONAL AIRPORT



المنارة
Al Manara

Head Office : Al Amir Abd Elmohsen St., Malaz, P.O. Box : 69753, Riyadh 11557, Saudi Arabia

Branches : Riyadh - Qaseem - Hail - Jeddah - Makkah - Taif - Dammam - Al Hasa - Madina - Yanboo

Tabuk - Sakakah - Jizan - Khamis Mashyet - Najran



www.almanara.com.sa